

Anti-SARS-CoV-2-Spike S2 ECD antibody (STJ11103173)

STJ11103173

GENERAL INFORMATION

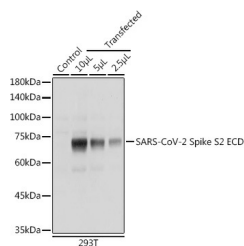
Product Type	Primary antibodies
Short Description	Rabbit polyclonal antibody anti-SARS-CoV-2-Spike S2 ECD is suitable for use in Western Blot, Immunofluorescence and Immunoprecipitation.
Applications	WB, IF, IP
Host/Source	Rabbit
Reactivity	SARS-CoV-2

PRODUCT PROPERTIES

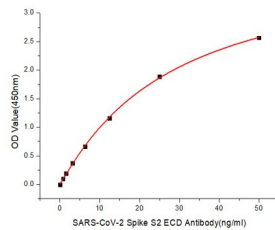
Clonality	Polyclonal
Clone ID	
Concentration	
Conjugation	Unconjugated
Purification	Affinity purification
Dilution Range	ELISA 1:500-1:2000 WB 1:500-1:2000 FC 1:50-1:200 IF 1:50-1:200
Formulation	PBS containing 0.02% Sodium Azide, 50% Glycerol, pH7.3.
Isotype	IgG
Storage Instruction	Store in a freezer at -20°C and avoid freeze-thaw cycles.

TARGET INFORMATION

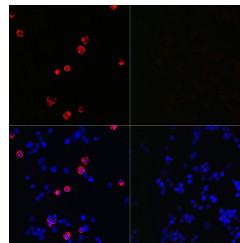
Gene ID	
Gene Symbol	
Uniprot ID	
Immunogen	Recombinant fusion protein of SARS-CoV-2 Spike S2 ECD.
Immunogen Region	
Specificity	
Immunogen Sequence	



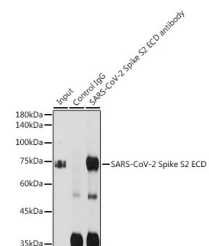
Western blot analysis of extracts of normal 293T cells transfected with Spike S2 ECD Protein, using SARS-CoV-2 Spike S2 ECD antibody (STJ11103173) at 1:5000 dilution. Secondary antibody: HRP Goat Anti-rabbit IgG (H+L) at 1:10000 dilution. Lysates/proteins: 25ug per lane. Blocking buffer: 3% nonfat dry milk in TBST. Detection: ECL Enhanced Kit. Exposure time: 1s.



Immobilized Recombinant SARS-CoV-2 S-ECD-PFS Protein (RP01293LQ) at 1 μg/mL (100 μg/well) can bind SARS-CoV-2 Spike S2 ECD rabbit polyclonal antibody (STJ11103173) with a linear range of 3.12-50ng/mL.



Immunofluorescence analysis of 293T cells transfected with SARS-CoV-2 Spike S2 ECD fusion protein (top left) and untreated 293T cells (top right) use SARS-CoV-2 Spike S2 ECD rabbit polyclonal antibody (STJ11103173) at dilution of 1:100 (40x lens). Blue: DAPI for nuclear staining.



Immunoprecipitation analysis of 300ug extracts of 293T cells using 3ug SARS-CoV-2 Spike S2 ECD antibody (STJ11103173). Western blot was performed from the immunoprecipitate using SARS-CoV-2 Spike S2 ECD antibody (STJ11103173) at a dilution of 1:5000.

This product is suitable for in-vitro studies under the RESEARCH USE ONLY [RUO] licence. This product must not be used as for diagnostic or other medical purposes.
St John's Laboratory Ltd, Knowledge Dock Business Centre, University Way, London, E16 2RD | Tel: 0208 223 3081