

Anti-Musashi-2 antibody (STJ11103154)

STJ11103154

GENERAL INFORMATION

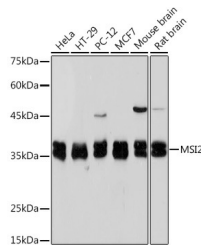
Product Type	Primary antibodies
Short Description	Rabbit monoclonal antibody anti-Musashi-2 (MSI2) is suitable for use in Western Blot and Immunohistochemistry.
Applications	WB, IHC
Host/Source	Rabbit
Reactivity	Human, Mouse, Rat

PRODUCT PROPERTIES

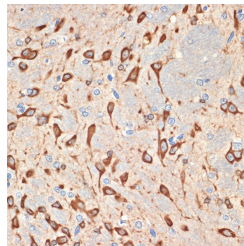
Clonality	Monoclonal
Clone ID	
Concentration	
Conjugation	Unconjugated
Purification	Affinity purification
Dilution Range	WB 1:500-1:2000 IHC 1:50-1:200
Formulation	PBS containing 0.02% Sodium Azide, 0.05% BSA, 50% Glycerol, pH7.3.
Isotype	IgG
Storage Instruction	Store in a freezer at -20°C and avoid freeze-thaw cycles.

TARGET INFORMATION

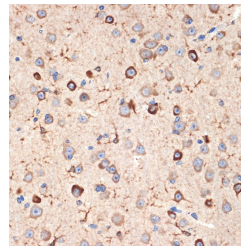
Gene ID	124540
Gene Symbol	MSI2
Uniprot ID	MSI2H_HUMAN
Immunogen	A synthesized peptide derived from human Musashi-2 (Musashi-2 (MSI2))
Immunogen Region	
Specificity	
Immunogen Sequence	



Western blot analysis of extracts of various cell lines, using Musashi-2 (Musashi-2 (MSI2)) rabbit monoclonal antibody (STJ11103154) at 1:1000 dilution. Secondary antibody: HRP Goat Anti-rabbit IgG (H+L) at 1:10000 dilution. Lysates/proteins: 25ug per lane. Blocking buffer: 3% nonfat dry milk in TBST. Detection: ECL Basic Kit. Exposure time: 5s.



Immunohistochemistry of paraffin-embedded rat brain using Musashi-2 (Musashi-2 (MSI2)) rabbit monoclonal antibody (STJ11103154) at dilution of 1:100 (40x lens).



Immunohistochemistry of paraffin-embedded mouse brain using Musashi-2 (Musashi-2 (MSI2)) rabbit monoclonal antibody (STJ11103154) at dilution of 1:100 (40x lens).

This product is suitable for in-vitro studies under the RESEARCH USE ONLY [RUO] licence. This product must not be used as for diagnostic or other medical purposes.

St John's Laboratory Ltd, Knowledge Dock Business Centre, University Way, London, E16 2RD | Tel: 0208 223 3081