

Anti-Nesprin 1 antibody (STJ11103130)

STJ11103130

GENERAL INFORMATION

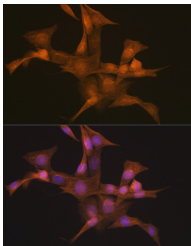
Product Type	Primary antibodies
Short Description	Rabbit monoclonal antibody anti-Nesprin 1 is suitable for use in Western Blot and Immunofluorescence.
Applications	WB, IF
Host/Source	Rabbit
Reactivity	Human, Mouse, Rat

PRODUCT PROPERTIES

Clonality	Monoclonal
Clone ID	
Concentration	
Conjugation	Unconjugated
Purification	Affinity purification
Dilution Range	WB 1:500-1:2000 IF 1:50-1:200
Formulation	PBS containing 0.02% Sodium Azide, 0.05% BSA, 50% Glycerol, pH7.3.
Isotype	IgG
Storage Instruction	Store in a freezer at -20°C and avoid freeze-thaw cycles.

TARGET INFORMATION

Gene ID	23345
Gene Symbol	SYNE1
Uniprot ID	SYNE1_HUMAN
Immunogen	A synthesized peptide derived from human Nesprin 1
Immunogen Region	
Specificity	
Immunogen Sequence	



Immunofluorescence analysis of NIH-3T3 cells using Nesprin 1 rabbit monoclonal antibody (STJ11103130) at dilution of 1:100 (40x lens). Blue: DAPI for nuclear staining.