

Anti-Calsequestrin 1 antibody (STJ11103065)

STJ11103065

GENERAL INFORMATION

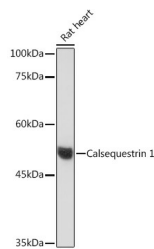
Product Type	Primary antibodies
Short Description	Rabbit monoclonal antibody anti-Calsequestrin 1 is suitable for use in Western Blot and Immunofluorescence.
Applications	WB, IF
Host/Source	Rabbit
Reactivity	Human, Mouse, Rat

PRODUCT PROPERTIES

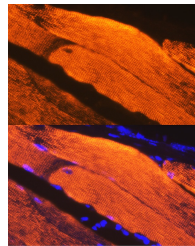
Clonality	Monoclonal
Clone ID	
Concentration	
Conjugation	Unconjugated
Purification	Affinity purification
Dilution Range	WB 1:500-1:2000 IF 1:50-1:200
Formulation	PBS containing 0.02% Sodium Azide, 0.05% BSA, 50% Glycerol, pH7.3.
Isotype	IgG
Storage Instruction	Store in a freezer at -20°C and avoid freeze-thaw cycles.

TARGET INFORMATION

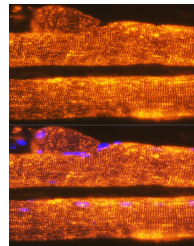
Gene ID	844
Gene Symbol	CASQ1
Uniprot ID	CASQ1_HUMAN
Immunogen	A synthesized peptide derived from human Calsequestrin 1
Immunogen Region	
Specificity	
Immunogen Sequence	



Western blot analysis of extracts of Rat heart, using Calsequestrin 1 rabbit monoclonal antibody (STJ11103065) at 1:500 dilution. Secondary antibody: HRP Goat Anti-rabbit IgG (H+L) at 1:10000 dilution. Lysates/proteins: 25ug per lane. Blocking buffer: 3% nonfat dry milk in TBST. Detection: ECL Basic Kit. Exposure time: 60s.



Immunofluorescence analysis of mouse skeletal muscle using Calsequestrin 1 antibody (STJ11103065) at dilution of 1:100. Blue: DAPI for nuclear staining.



Immunofluorescence analysis of Rat skeletal muscle using Calsequestrin 1 antibody (STJ11103065) at dilution of 1:100. Blue: DAPI for nuclear staining.

This product is suitable for in-vitro studies under the RESEARCH USE ONLY [RUO] licence. This product must not be used as for diagnostic or other medical purposes.
St John's Laboratory Ltd, Knowledge Dock Business Centre, University Way, London, E16 2RD | Tel: 0208 223 3081