

## Anti-Pan-AKT antibody (STJ11102945)

STJ11102945

### GENERAL INFORMATION

<b>Product Type</b>	Primary antibodies
<b>Short Description</b>	Rabbit monoclonal antibody anti-Pan-AKT is suitable for use in Western Blot, Immunohistochemistry, Immunofluorescence and Immunoprecipitation.
<b>Applications</b>	WB, IHC, IF, IP
<b>Host/Source</b>	Rabbit
<b>Reactivity</b>	Human, Mouse, Rat

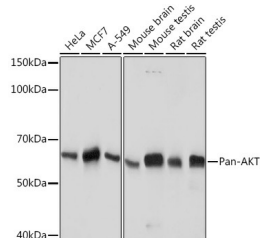
### PRODUCT PROPERTIES

<b>Clonality</b>	Monoclonal
<b>Clone ID</b>	
<b>Concentration</b>	
<b>Conjugation</b>	Unconjugated
<b>Purification</b>	Affinity purification
<b>Dilution Range</b>	WB 1:500-1:2000 IHC 1:50-1:200 IF 1:50-1:200 IP 1:50-1:200
<b>Formulation</b>	PBS containing 0.02% Sodium Azide, 0.05% BSA, 50% Glycerol, pH7.3.
<b>Isotype</b>	IgG
<b>Storage Instruction</b>	Store in a freezer at -20°C and avoid freeze-thaw cycles.

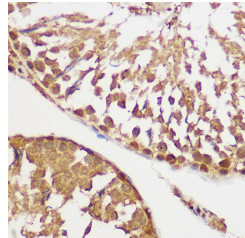
### TARGET INFORMATION

**Gene ID** [207](#)  
[10000](#)  
[208](#)  
[AKT1](#)  
[AKT3](#)  
[AKT1\\_HUMAN](#)  
[AKT3\\_HUMAN](#)  
[AKT2\\_HUMAN](#)

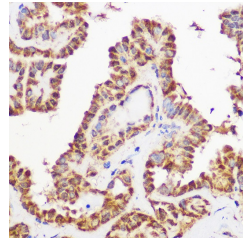
**Immunogen** A synthesized peptide derived from human Pan-AKT.  
**Immunogen Region**  
**Specificity**  
**Immunogen Sequence**



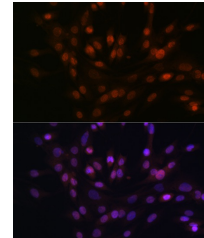
Western blot analysis of extracts of various cell lines, using Pan-AKT antibody (STJ11102945) at 1:1000 dilution. Secondary antibody: HRP Goat Anti-rabbit IgG (H+L) at 1:10000 dilution. Lysates/proteins: 25µg per lane. Blocking buffer: 3% nonfat dry milk in TBST. Detection: ECL Basic Kit. Exposure time: 5s.



Immunohistochemistry of paraffin-embedded rat testis using Pan-AKT antibody (STJ11102945) at dilution of 1:100 (40x lens). Perform microwave antigen retrieval with 10 mM Tris/EDTA buffer pH 9.0 before commencing with immunohistochemistry staining protocol.



Immunohistochemistry of paraffin-embedded human thyroid using Pan-AKT antibody (STJ11102945) at dilution of 1:100 (40x lens). Perform microwave antigen retrieval with 10 mM Tris/EDTA buffer pH 9.0 before commencing with immunohistochemistry staining protocol.



Immunofluorescence analysis of C6 using Pan-AKT antibody (STJ11102945) at dilution of 1:100. Blue: DAPI for nuclear staining.