

## Anti-PKA C-alpha antibody (STJ11102940)

STJ11102940

### GENERAL INFORMATION

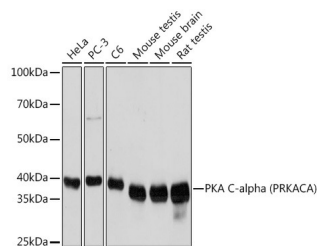
|                          |  |
|--------------------------|--|
| <b>Product Type</b>      | Primary antibodies   |
| <b>Short Description</b> | Rabbit monoclonal antibody anti-PKA C-alpha (PRKACA) is suitable for use in Western Blot and Immunofluorescence. |
| <b>Applications</b>      | WB, IF   |
| <b>Host/Source</b>       | Rabbit   |
| <b>Reactivity</b>        | Human, Mouse, Rat  |

### PRODUCT PROPERTIES

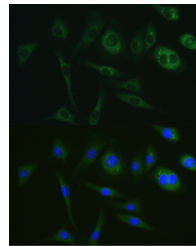
|                            |   |
|----------------------------|---|
| <b>Clonality</b>           | Monoclonal  |
| <b>Clone ID</b>            |   |
| <b>Concentration</b>       |   |
| <b>Conjugation</b>         | Unconjugated  |
| <b>Purification</b>        | Affinity purification                                     |
| <b>Dilution Range</b>      | WB 1:500-1:2000<br>IF 1:50-1:200                          |
| <b>Formulation</b>         | PBS containing 0.02% Sodium Azide, 50% Glycerol, pH7.3.   |
| <b>Isotype</b>             | IgG   |
| <b>Storage Instruction</b> | Store in a freezer at -20°C and avoid freeze-thaw cycles. |

### TARGET INFORMATION

|                           |  |
|---------------------------|--|
| <b>Gene ID</b>            | 5566   |
| <b>Gene Symbol</b>        | PRKACA   |
| <b>Uniprot ID</b>         | KAPCA_HUMAN  |
| <b>Immunogen</b>          | Recombinant protein of human PKA C-alpha (PKA C-alpha (PRKACA)). |
| <b>Immunogen Region</b>   |  |
| <b>Specificity</b>        |  |
| <b>Immunogen Sequence</b> |  |



Western blot analysis of extracts of various cell lines, using PKA C-alpha (PKA C-alpha (PRKACA)) antibody (STJ11102940) at 1:1000 dilution. Secondary antibody: HRP Goat Anti-mouse IgG (H+L) at 1:10000 dilution. Lysates/proteins: 25ug per lane. Blocking buffer: 3% nonfat dry milk in TBST. Detection: ECL Basic Kit. Exposure time: 1s.



Immunofluorescence analysis of BALB-3T3 cells using PKA C-alpha (PKA C-alpha (PRKACA)) mouse monoclonal antibody (STJ11102940) at dilution of 1:100 (40x lens). Blue: DAPI for nuclear staining.

This product is suitable for in-vitro studies under the RESEARCH USE ONLY [RUO] licence. This product must not be used as for diagnostic or other medical purposes.

St John's Laboratory Ltd, Knowledge Dock Business Centre, University Way, London, E16 2RD | Tel: 0208 223 3081