

## Anti-PD-L1/CD274 antibody (STJ11102939)

STJ11102939

### GENERAL INFORMATION

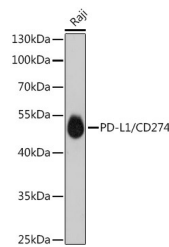
<b>Product Type</b>	Primary antibodies
<b>Short Description</b>	Rabbit monoclonal antibody anti-PD-L1/CD274 is suitable for use in Western Blot and Immunohistochemistry.
<b>Applications</b>	WB, IHC
<b>Host/Source</b>	Rabbit
<b>Reactivity</b>	Human

### PRODUCT PROPERTIES

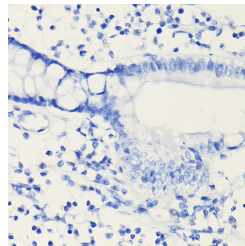
<b>Clonality</b>	Monoclonal
<b>Clone ID</b>	
<b>Concentration</b>	
<b>Conjugation</b>	Unconjugated
<b>Purification</b>	Affinity purification
<b>Dilution Range</b>	WB 1:500-1:2000 IHC 1:50-1:200
<b>Formulation</b>	Tris Buffer, pH7.3-7.7, with 1% BSA and <0.1% Sodium Azide.
<b>Isotype</b>	IgG
<b>Storage Instruction</b>	Store at 2-8°C

### TARGET INFORMATION

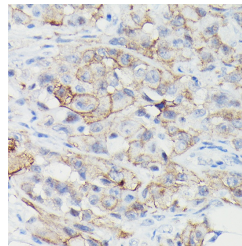
<b>Gene ID</b>	29126
<b>Gene Symbol</b>	CD274
<b>Uniprot ID</b>	PD1L1_HUMAN
<b>Immunogen</b>	Recombinant protein of human PD-L1 extracellular domain.
<b>Immunogen Region</b>	
<b>Specificity</b>	
<b>Immunogen Sequence</b>	



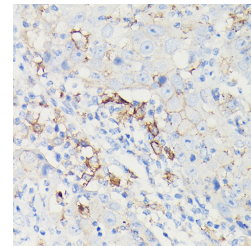
Western blot analysis of extracts of Raji cells, using PD-L1/CD274/CD274 antibody (STJ11102939) at 1:500 dilution. Secondary antibody: HRP Goat Anti-rabbit IgG (H+L) at 1:10000 dilution. Lysates/proteins: 25ug per lane. Blocking buffer: 3% nonfat dry milk in TBST. Detection: ECL Basic Kit. Exposure time: 3min.



Immunohistochemistry of paraffin-embedded Human intestinal adenocarcinoma (negative control samples) using PD-L1/CD274/CD274 rabbit monoclonal antibody (STJ11102939) at dilution of 1:100 (40x lens). Perform high pressure antigen retrieval with 10 mM citrate buffer pH 6.0 before commencing with immunohistochemistry staining protocol.



Immunohistochemistry of paraffin-embedded Human lung cancer sarcoma using PD-L1/CD274/CD274 rabbit monoclonal antibody (STJ11102939) at dilution of 1:100 (40x lens). Perform high pressure antigen retrieval with 10 mM citrate buffer pH 6.0 before commencing with immunohistochemistry staining protocol.



Immunohistochemistry of paraffin-embedded human lung squamous carcinoma tissue using PD-L1/CD274/CD274 rabbit monoclonal antibody (STJ11102939) at dilution of 1:100 (40x lens). Perform high pressure antigen retrieval with 10 mM citrate buffer pH 6.0 before commencing with immunohistochemistry staining protocol.

This product is suitable for in-vitro studies under the RESEARCH USE ONLY [RUO] licence. This product must not be used as for diagnostic or other medical purposes.

St John's Laboratory Ltd, Knowledge Dock Business Centre, University Way, London, E16 2RD | Tel: 0208 223 3081