

Anti-CAMSAP1 antibody (STJ11102934)

STJ11102934

GENERAL INFORMATION

Product Type	Primary antibodies
Short Description	Rabbit polyclonal antibody anti-CAMSAP1 is suitable for use in Western Blot and Immunofluorescence.
Applications	WB, IF
Host/Source	Rabbit
Reactivity	Human, Mouse

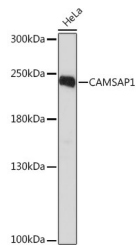
PRODUCT PROPERTIES

Clonality	Polyclonal
Clone ID	
Concentration	
Conjugation	Unconjugated
Purification	Affinity purification
Dilution Range	WB 1:500-1:2000 IF 1:50-1:200
Formulation	PBS containing 0.02% Sodium Azide, 50% Glycerol, pH7.3.
Isotype	IgG
Storage Instruction	Store in a freezer at -20°C and avoid freeze-thaw cycles.

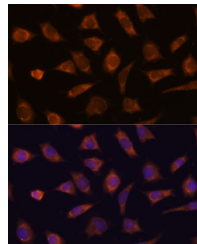
TARGET INFORMATION

Gene ID	157922
Gene Symbol	CAMSAP1
Uniprot ID	CAMP1_HUMAN
Immunogen	Recombinant fusion protein containing a sequence corresponding to amino acids 350-650 of human CAMSAP1 (NP_056262.3).

Immunogen Region
Specificity
Immunogen
Sequence



Western blot analysis of extracts of HeLa cells, using CAMSAP1 rabbit polyclonal antibody (STJ11102934) at 1:1000 dilution. Secondary antibody: HRP Goat Anti-rabbit IgG (H+L) at 1:10000 dilution. Lysates/proteins: 25ug per lane. Blocking buffer: 3% nonfat dry milk in TBST. Detection: ECL Basic Kit. Exposure time: 90s.



Immunofluorescence analysis of L929 cells using CAMSAP1 antibody (STJ11102934) at dilution of 1:100. Blue: DAPI for nuclear staining.