

Anti-TPCN2 antibody (STJ11102899)

STJ11102899

GENERAL INFORMATION

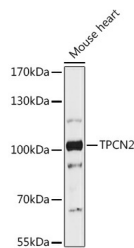
Product Type	Primary antibodies
Short Description	Rabbit polyclonal antibody anti-TPCN2 is suitable for use in Western Blot.
Applications	WB
Host/Source	Rabbit
Reactivity	Mouse

PRODUCT PROPERTIES

Clonality	Polyclonal
Clone ID	
Concentration	
Conjugation	Unconjugated
Purification	Affinity purification
Dilution Range	WB 1:500-1:2000
Formulation	PBS containing 0.02% Sodium Azide, 50% Glycerol, pH7.3.
Isotype	IgG
Storage Instruction	Store in a freezer at -20°C and avoid freeze-thaw cycles.

TARGET INFORMATION

Gene ID	219931
Gene Symbol	TPCN2
Uniprot ID	TPC2_HUMAN
Immunogen	Recombinant fusion protein containing a sequence corresponding to amino acids 11-85 of human TPCN2 (NP_620714.2).
Immunogen Region	
Specificity	
Immunogen Sequence	



Western blot analysis of extracts of mouse heart, using TPCN2 antibody (STJ11102899) at 1:1000 dilution. Secondary antibody: HRP Goat Anti-rabbit IgG (H+L) at 1:10000 dilution. Lysates/proteins: 25µg per lane. Blocking buffer: 3% nonfat dry milk in TBST. Detection: ECL Enhanced Kit. Exposure time: 300s.