

## Anti-PDE12 antibody (STJ11102898)

STJ11102898

### GENERAL INFORMATION

|                          |   |
|--------------------------|---|
| <b>Product Type</b>      | Primary antibodies  |
| <b>Short Description</b> | Rabbit polyclonal antibody anti-PDE12 is suitable for use in Western Blot and Immunofluorescence. |
| <b>Applications</b>      | WB, IF  |
| <b>Host/Source</b>       | Rabbit  |
| <b>Reactivity</b>        | Mouse, Rat  |

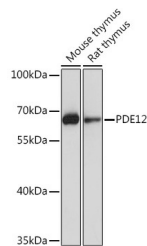
### PRODUCT PROPERTIES

|                            |   |
|----------------------------|---|
| <b>Clonality</b>           | Polyclonal  |
| <b>Clone ID</b>            |   |
| <b>Concentration</b>       |   |
| <b>Conjugation</b>         | Unconjugated  |
| <b>Purification</b>        | Affinity purification                                     |
| <b>Dilution Range</b>      | WB 1:500-1:2000<br>IF 1:50-1:200                          |
| <b>Formulation</b>         | PBS containing 0.02% Sodium Azide, 50% Glycerol, pH7.3.   |
| <b>Isotype</b>             | IgG   |
| <b>Storage Instruction</b> | Store in a freezer at -20°C and avoid freeze-thaw cycles. |

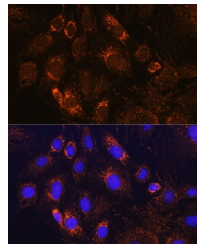
### TARGET INFORMATION

|                    |   |
|--------------------|---|
| <b>Gene ID</b>     | <a href="#">201626</a>  |
| <b>Gene Symbol</b> | <a href="#">PDE12</a>   |
| <b>Uniprot ID</b>  | <a href="#">PDE12_HUMAN</a>   |
| <b>Immunogen</b>   | Recombinant fusion protein containing a sequence corresponding to amino acids 17-300 of human PDE12 (NP_001309106.1). |

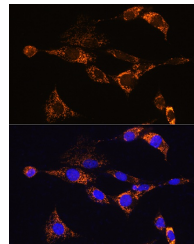
**Immunogen Region  
Specificity  
Immunogen  
Sequence**



Western blot analysis of extracts of various cell lines, using PDE12 rabbit polyclonal antibody (STJ11102898) at 1:1000 dilution. Secondary antibody: HRP Goat Anti-rabbit IgG (H+L) at 1:10000 dilution. Lysates/proteins: 25ug per lane. Blocking buffer: 3% nonfat dry milk in TBST. Detection: ECL Basic Kit. Exposure time: 10s.



Immunofluorescence analysis of C6 cells using PDE12 rabbit polyclonal antibody (STJ11102898) at dilution of 1:100. Blue: DAPI for nuclear staining.



Immunofluorescence analysis of NIH/3T3 cells using PDE12 rabbit polyclonal antibody (STJ11102898) at dilution of 1:100. Blue: DAPI for nuclear staining.