

Anti-CYBRD1 antibody (STJ11102883)

STJ11102883

GENERAL INFORMATION

Product Type	Primary antibodies
Short Description	Rabbit polyclonal antibody anti-CYBRD1 is suitable for use in Western Blot.
Applications	WB
Host/Source	Rabbit
Reactivity	Human

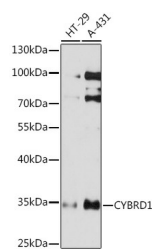
PRODUCT PROPERTIES

Clonality	Polyclonal
Clone ID	
Concentration	
Conjugation	Unconjugated
Purification	Affinity purification
Dilution Range	WB 1:500-1:2000
Formulation	PBS containing 0.02% Sodium Azide, 50% Glycerol, pH7.3.
Isotype	IgG
Storage Instruction	Store in a freezer at -20°C and avoid freeze-thaw cycles.

TARGET INFORMATION

Gene ID	79901
Gene Symbol	CYBRD1
Uniprot ID	CYBR1_HUMAN
Immunogen	Recombinant fusion protein containing a sequence corresponding to amino acids 215-286 of human CYBRD1 (NP_079119.3).

Immunogen Region
Specificity
Immunogen
Sequence



Western blot analysis of extracts of various cell lines, using CYBRD1 rabbit polyclonal antibody (STJ11102883) at 1:1000 dilution. Secondary antibody: HRP Goat Anti-rabbit IgG (H+L) at 1:10000 dilution. Lysates/proteins: 25ug per lane. Blocking buffer: 3% nonfat dry milk in TBST. Detection: ECL Basic Kit. Exposure time: 10s.

This product is suitable for in-vitro studies under the RESEARCH USE ONLY [RUO] licence. This product must not be used as for diagnostic or other medical purposes.

St John's Laboratory Ltd, Knowledge Dock Business Centre, University Way, London, E16 2RD | Tel: 0208 223 3081