

Anti-SEMA4A antibody (STJ11102878)

STJ11102878

GENERAL INFORMATION

Product Type	Primary antibodies
Short Description	Rabbit polyclonal antibody anti-SEMA4A is suitable for use in Western Blot and Immunofluorescence.
Applications	WB, IF
Host/Source	Rabbit
Reactivity	Human, Mouse, Rat

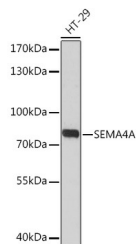
PRODUCT PROPERTIES

Clonality	Polyclonal
Clone ID	
Concentration	
Conjugation	Unconjugated
Purification	Affinity purification
Dilution Range	WB 1:500-1:2000 IF 1:50-1:200
Formulation	PBS containing 0.02% Sodium Azide, 50% Glycerol, pH7.3.
Isotype	IgG
Storage Instruction	Store in a freezer at -20°C and avoid freeze-thaw cycles.

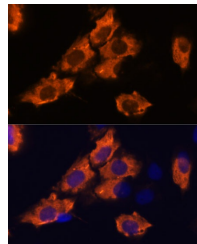
TARGET INFORMATION

Gene ID	64218
Gene Symbol	SEMA4A
Uniprot ID	SEM4A_HUMAN
Immunogen	Recombinant fusion protein containing a sequence corresponding to amino acids 320-580 of human SEMA4A (NP_071762.2).

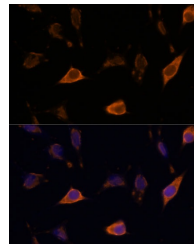
**Immunogen Region
Specificity
Immunogen
Sequence**



Western blot analysis of extracts of HT-29 cells, using SEMA4A rabbit polyclonal antibody (STJ11102878) at 1:3000 dilution. Secondary antibody: HRP Goat Anti-rabbit IgG (H+L) at 1:10000 dilution. Lysates/proteins: 25ug per lane. Blocking buffer: 3% nonfat dry milk in TBST. Detection: ECL Basic Kit. Exposure time: 90s.



Immunofluorescence analysis of C6 cells using SEMA4A antibody (STJ11102878) at dilution of 1:100. Blue: DAPI for nuclear staining.



Immunofluorescence analysis of L929 cells using SEMA4A antibody (STJ11102878) at dilution of 1:100. Blue: DAPI for nuclear staining.