

Anti-TMEM165 antibody (STJ11102872)

STJ11102872

GENERAL INFORMATION

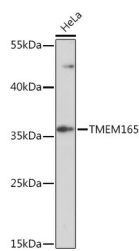
Product Type	Primary antibodies
Short Description	Rabbit polyclonal antibody anti-TMEM165 is suitable for use in Western Blot.
Applications	WB
Host/Source	Rabbit
Reactivity	Human

PRODUCT PROPERTIES

Clonality	Polyclonal
Clone ID	
Concentration	
Conjugation	Unconjugated
Purification	Affinity purification
Dilution Range	WB 1:500-1:2000
Formulation	PBS containing 0.02% Sodium Azide, 50% Glycerol, pH7.3.
Isotype	IgG
Storage Instruction	Store in a freezer at -20°C and avoid freeze-thaw cycles.

TARGET INFORMATION

Gene ID	55858
Gene Symbol	TMEM165
Uniprot ID	TM165_HUMAN
Immunogen	Recombinant fusion protein containing a sequence corresponding to amino acids 172-230 of human TMEM165 (NP_060945.2).
Immunogen Region	
Specificity	
Immunogen Sequence	



Western blot analysis of extracts of HeLa cells, using TMEM165 rabbit polyclonal antibody (STJ11102872) at 1:1000 dilution. Secondary antibody: HRP Goat Anti-rabbit IgG (H+L) at 1:10000 dilution. Lysates/proteins: 25ug per lane. Blocking buffer: 3% nonfat dry milk in TBST. Detection: ECL Enhanced Kit. Exposure time: 5min.

This product is suitable for in-vitro studies under the RESEARCH USE ONLY [RUO] licence. This product must not be used as for diagnostic or other medical purposes.
St John's Laboratory Ltd, Knowledge Dock Business Centre, University Way, London, E16 2RD | Tel: 0208 223 3081