

## Anti-GEMIN5 antibody (STJ11102852)

STJ11102852

### GENERAL INFORMATION

<b>Product Type</b>	Primary antibodies
<b>Short Description</b>	Rabbit polyclonal antibody anti-GEMIN5 is suitable for use in Western Blot and Immunohistochemistry.
<b>Applications</b>	WB, IHC
<b>Host/Source</b>	Rabbit
<b>Reactivity</b>	Human, Mouse, Rat

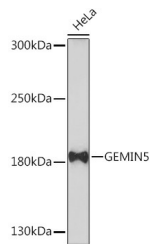
### PRODUCT PROPERTIES

<b>Clonality</b>	Polyclonal
<b>Clone ID</b>	
<b>Concentration</b>	
<b>Conjugation</b>	Unconjugated
<b>Purification</b>	Affinity purification
<b>Dilution Range</b>	WB 1:500-1:2000 IHC 1:50-1:100
<b>Formulation</b>	PBS containing 0.02% Sodium Azide, 50% Glycerol, pH7.3.
<b>Isotype</b>	IgG
<b>Storage Instruction</b>	Store in a freezer at -20°C and avoid freeze-thaw cycles.

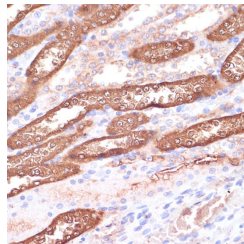
### TARGET INFORMATION

<b>Gene ID</b>	25929
<b>Gene Symbol</b>	GEMIN5
<b>Uniprot ID</b>	GEMIN5_HUMAN
<b>Immunogen</b>	Recombinant fusion protein containing a sequence corresponding to amino acids 750-950 of human GEMIN5 (NP_056280.2).

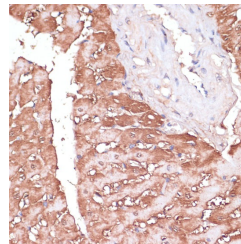
**Immunogen Region  
Specificity  
Immunogen  
Sequence**



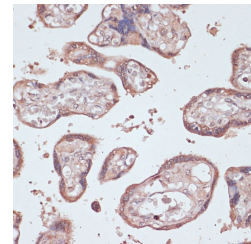
Western blot analysis of extracts of HeLa cells, using GEMIN5 rabbit polyclonal antibody (STJ11102852) at 1:1000 dilution. Secondary antibody: HRP Goat Anti-rabbit IgG (H+L) at 1:10000 dilution. Lysates/proteins: 25ug per lane. Blocking buffer: 3% nonfat dry milk in TBST. Detection: ECL Basic Kit. Exposure time: 180s.



Immunohistochemistry of paraffin-embedded rat kidney using GEMIN5 antibody (STJ11102852) at dilution of 1:100 (40x lens).



Immunohistochemistry of paraffin-embedded rat heart using GEMIN5 antibody (STJ11102852) at dilution of 1:100 (40x lens).



Immunohistochemistry of paraffin-embedded human placenta using GEMIN5 antibody (STJ11102852) at dilution of 1:100 (40x lens).