

Anti-CD146/MCAM antibody (STJ11102800)

STJ11102800

GENERAL INFORMATION

Product Type	Primary antibodies
Short Description	Rabbit polyclonal antibody anti-CD146/MCAM is suitable for use in Western Blot and Immunohistochemistry.
Applications	WB, IHC
Host/Source	Rabbit
Reactivity	Human, Mouse

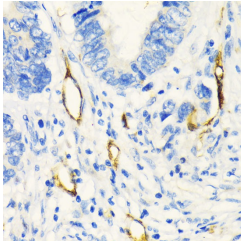
PRODUCT PROPERTIES

Clonality	Polyclonal
Clone ID	
Concentration	
Conjugation	Unconjugated
Purification	Affinity purification
Dilution Range	WB 1:500-1:2000 IHC 1:50-1:200
Formulation	PBS containing 0.02% Sodium Azide, 50% Glycerol, pH7.3.
Isotype	IgG
Storage Instruction	Store in a freezer at -20°C and avoid freeze-thaw cycles.

TARGET INFORMATION

Gene ID	4162
Gene Symbol	MCAM
Uniprot ID	MUC18_HUMAN
Immunogen	Recombinant fusion protein containing a sequence corresponding to amino acids 340-560 of human CD146/CD146/MCAM (NP_006491.2).

Immunogen Region
Specificity
Immunogen
Sequence



Immunohistochemistry of paraffin-embedded human colon carcinoma using CD146/CD146/MCAM antibody (STJ11102800) at dilution of 1:100 (40x lens).

This product is suitable for in-vitro studies under the RESEARCH USE ONLY [RUO] licence. This product must not be used as for diagnostic or other medical purposes.
St John's Laboratory Ltd, Knowledge Dock Business Centre, University Way, London, E16 2RD | Tel: 0208 223 3081