

Anti-Insulin Receptor antibody (STJ11102794)

STJ11102794

GENERAL INFORMATION

Product Type	Primary antibodies
Short Description	Rabbit polyclonal antibody anti-Insulin Receptor is suitable for use in Western Blot and Immunoprecipitation.
Applications	WB, IP
Host/Source	Rabbit
Reactivity	Human, Mouse, Rat

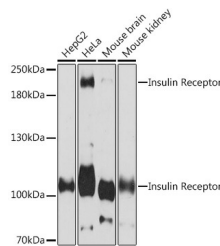
PRODUCT PROPERTIES

Clonality	Polyclonal
Clone ID	
Concentration	
Conjugation	Unconjugated
Purification	Affinity purification
Dilution Range	WB 1:500-1:2000 IP 1:50-1:200
Formulation	PBS containing 0.02% Sodium Azide, 50% Glycerol, pH7.3.
Isotype	IgG
Storage Instruction	Store in a freezer at -20°C and avoid freeze-thaw cycles.

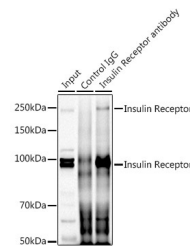
TARGET INFORMATION

Gene ID	3643
Gene Symbol	INSR
Uniprot ID	INSR_HUMAN
Immunogen	Recombinant fusion protein containing a sequence corresponding to amino acids 1281-1382 of human INSR (NP_000199.2).

**Immunogen Region
Specificity
Immunogen
Sequence**



Western blot analysis of extracts of various cell lines, using Insulin Receptor rabbit polyclonal antibody (STJ11102794) at 1:3000 dilution. Secondary antibody: HRP Goat Anti-rabbit IgG (H+L) at 1:10000 dilution. Lysates/proteins: 25ug per lane. Blocking buffer: 3% nonfat dry milk in TBST. Detection: ECL Basic Kit. Exposure time: 30s.



Immunoprecipitation analysis of 300ug extracts of HeLa cells using 3ug Insulin Receptor antibody (STJ11102794). Western blot was performed from the immunoprecipitate using Insulin Receptor (STJ11102794) at a dilution of 1:1000.

This product is suitable for in-vitro studies under the RESEARCH USE ONLY [RUO] licence. This product must not be used as for diagnostic or other medical purposes.
St John's Laboratory Ltd, Knowledge Dock Business Centre, University Way, London, E16 2RD | Tel: 0208 223 3081