

Anti-CALCA antibody (STJ11102780)

STJ11102780

GENERAL INFORMATION

Product Type	Primary antibodies
Short Description	Rabbit polyclonal antibody anti-CALCA is suitable for use in Western Blot and Immunohistochemistry.
Applications	WB, IHC
Host/Source	Rabbit
Reactivity	Human, Mouse, Rat

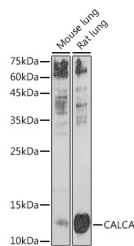
PRODUCT PROPERTIES

Clonality	Polyclonal
Clone ID	
Concentration	
Conjugation	Unconjugated
Purification	Affinity purification
Dilution Range	WB 1:500-1:2000 IHC 1:50-1:200
Formulation	PBS containing 0.02% Sodium Azide, 50% Glycerol, pH7.3.
Isotype	IgG
Storage Instruction	Store in a freezer at -20°C and avoid freeze-thaw cycles.

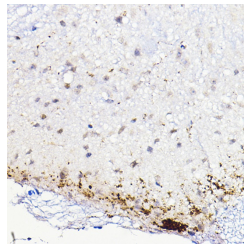
TARGET INFORMATION

Gene ID	796
Gene Symbol	CALCA
Uniprot ID	CALCA_HUMAN
Immunogen	Recombinant fusion protein containing a sequence corresponding to amino acids 1-141 of human CALCA (NP_001029124.1).

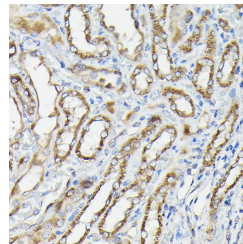
**Immunogen Region
Specificity
Immunogen
Sequence**



Western blot analysis of extracts of various cell lines, using CALCA antibody (STJ11102780) at 1:1000 dilution. Secondary antibody: HRP Goat Anti-rabbit IgG (H+L) at 1:10000 dilution. Lysates/proteins: 25ug per lane. Blocking buffer: 3% nonfat dry milk in TBST. Detection: ECL Basic Kit. Exposure time: 180s.



Immunohistochemistry of paraffin-embedded mouse spinal cord using CALCA rabbit polyclonal antibody (STJ11102780) at dilution of 1:100 (40x lens).



Immunohistochemistry of paraffin-embedded Rat kidney using CALCA antibody (STJ11102780) at dilution of 1:100 (40x lens).