

Anti-Myeloperoxidase antibody (STJ1102741)

STJ1102741

GENERAL INFORMATION

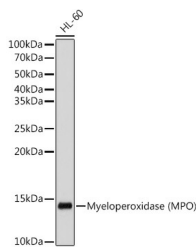
Product Type	Primary antibodies
Short Description	Rabbit monoclonal antibody anti-Myeloperoxidase (MPO) is suitable for use in Western Blot and Immunofluorescence.
Applications	WB, IF
Host/Source	Rabbit
Reactivity	Human, Mouse, Rat

PRODUCT PROPERTIES

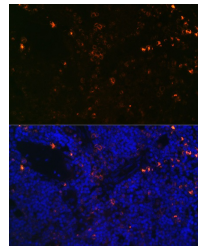
Clonality	Monoclonal
Clone ID	
Concentration	
Conjugation	Unconjugated
Purification	Affinity purification
Dilution Range	WB 1:500-1:2000 IF 1:50-1:200
Formulation	PBS containing 0.02% Sodium Azide, 0.05% BSA, 50% Glycerol, pH7.3.
Isotype	IgG
Storage Instruction	Store in a freezer at -20°C and avoid freeze-thaw cycles.

TARGET INFORMATION

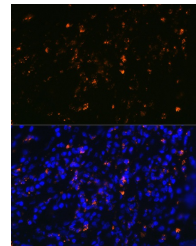
Gene ID	4353
Gene Symbol	MPO
Uniprot ID	PERM_HUMAN
Immunogen	A synthesized peptide derived from human Myeloperoxidase (MPO)
Immunogen Region	
Specificity	
Immunogen Sequence	



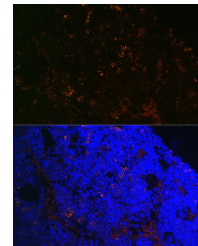
Western blot analysis of extracts of HL-60 cells, using Myeloperoxidase (MPO) antibody (STJ1102741) at 1:500 dilution. Secondary antibody: HRP Goat Anti-rabbit IgG (H+L) at 1:10000 dilution. Lysates/proteins: 25µg per lane. Blocking buffer: 3% nonfat dry milk in TBST. Detection: ECL Basic Kit. Exposure time: 3s.



Immunofluorescence analysis of rat bone marrow using Myeloperoxidase (MPO) rabbit monoclonal antibody (STJ1102741) at dilution of 1:100 (40x lens). Blue: DAPI for nuclear staining.



Immunofluorescence analysis of human colon carcinoma using Myeloperoxidase (MPO) rabbit monoclonal antibody (STJ1102741) at dilution of 1:100 (40x lens). Blue: DAPI for nuclear staining.



Immunofluorescence analysis of mouse bone marrow using Myeloperoxidase (MPO) rabbit monoclonal antibody (STJ1102741) at dilution of 1:100 (40x lens). Blue: DAPI for nuclear staining.

This product is suitable for in-vitro studies under the RESEARCH USE ONLY [RUO] licence. This product must not be used as for diagnostic or other medical purposes.
St John's Laboratory Ltd, Knowledge Dock Business Centre, University Way, London, E16 2RD | Tel: 0208 223 3081