

Anti-S6 Ribosomal Protein antibody (STJ11102736)

STJ11102736

GENERAL INFORMATION

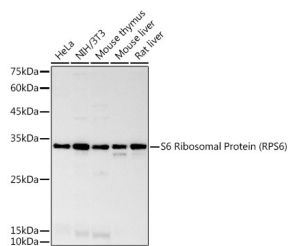
| | |
|--------------------------|--|
| Product Type | Primary antibodies |
| Short Description | Rabbit monoclonal antibody anti-S6 Ribosomal Protein (RPS6). |
| Applications | |
| Host/Source | Rabbit |
| Reactivity | |

PRODUCT PROPERTIES

| | |
|----------------------------|-----------------------|
| Clonality | Monoclonal |
| Clone ID | |
| Concentration | |
| Conjugation | Unconjugated |
| Purification | Affinity purification |
| Dilution Range | |
| Formulation | |
| Isotype | IgG |
| Storage Instruction | |

TARGET INFORMATION

| | |
|---------------------------|-----------------------------------|
| Gene ID | 6194 |
| Gene Symbol | RPS6 |
| Uniprot ID | RS6_HUMAN |
| Immunogen | Recombinant protein of human RPS6 |
| Immunogen Region | |
| Specificity | |
| Immunogen Sequence | |



Western blot analysis of extracts of various cell lines, using S6 Ribosomal Protein (RPS6) antibody (STJ11102736) at 1:1000 dilution. Secondary antibody: HRP Goat Anti-rabbit IgG (H+L) at 1:10000 dilution. Lysates/proteins: 25ug per lane. Blocking buffer: 3% nonfat dry milk in TBST. Detection: ECL Basic Kit. Exposure time: 180s.

This product is suitable for in-vitro studies under the RESEARCH USE ONLY [RUO] licence. This product must not be used as for diagnostic or other medical purposes.
 St John's Laboratory Ltd, Knowledge Dock Business Centre, University Way, London, E16 2RD | Tel: 0208 223 3081