

## Anti-CACNA1H antibody (STJ11102728)

STJ11102728

### GENERAL INFORMATION

<b>Product Type</b>	Primary antibodies
<b>Short Description</b>	Rabbit polyclonal antibody anti-CACNA1H is suitable for use in Western Blot and Immunofluorescence.
<b>Applications</b>	WB, IF
<b>Host/Source</b>	Rabbit
<b>Reactivity</b>	Human, Mouse, Rat

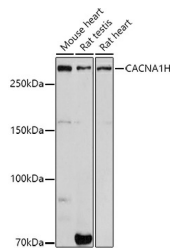
### PRODUCT PROPERTIES

<b>Clonality</b>	Polyclonal
<b>Clone ID</b>	
<b>Concentration</b>	
<b>Conjugation</b>	Unconjugated
<b>Purification</b>	Affinity purification
<b>Dilution Range</b>	WB 1:500-1:2000 IF 1:50-1:200
<b>Formulation</b>	PBS containing 0.02% Sodium Azide, 50% Glycerol, pH7.3.
<b>Isotype</b>	IgG
<b>Storage Instruction</b>	Store in a freezer at -20°C and avoid freeze-thaw cycles.

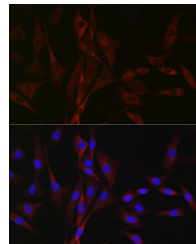
### TARGET INFORMATION

<b>Gene ID</b>	8912
<b>Gene Symbol</b>	CACNA1H
<b>Uniprot ID</b>	CAC1H_HUMAN
<b>Immunogen</b>	Recombinant fusion protein containing a sequence corresponding to amino acids 260-360 of human CACNA1H (NP_066921.2).

**Immunogen Region**  
**Specificity**  
**Immunogen**  
**Sequence**



Western blot analysis of extracts of various cell lines, using CACNA1H antibody (STJ11102728) at 1:1000 dilution. Secondary antibody: HRP Goat Anti-rabbit IgG (H+L) at 1:10000 dilution. Lysates/proteins: 25ug per lane. Blocking buffer: 3% nonfat dry milk in TBST. Detection: ECL Basic Kit. Exposure time: 180s.



Immunofluorescence analysis of NIH/3T3 cells using CACNA1H rabbit polyclonal antibody (STJ11102728) at dilution of 1:100 (40x lens). Blue: DAPI for nuclear staining.