

Anti-Phospho-Phospho-BRD4-S492/S494-S492/S494 antibody (STJ11102665)

STJ11102665

GENERAL INFORMATION

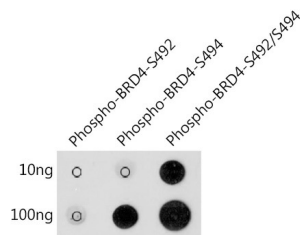
Product Type	Primary antibodies
Short Description	Rabbit polyclonal antibody anti-Phospho-BRD4-S492/S494 is suitable for use in Western Blot.
Applications	WB
Host/Source	Rabbit
Reactivity	Human

PRODUCT PROPERTIES

Clonality	Polyclonal
Clone ID	
Concentration	
Conjugation	Unconjugated
Purification	Affinity purification
Dilution Range	DB 1:500-1:2000 WB 1:500-1:2000
Formulation	PBS containing 0.02% Sodium Azide, 50% Glycerol, pH7.3.
Isotype	IgG
Storage Instruction	Store in a freezer at -20°C and avoid freeze-thaw cycles.

TARGET INFORMATION

Gene ID	23476
Gene Symbol	BRD4
Uniprot ID	BRD4_HUMAN
Immunogen	A phospho synthetic peptide corresponding to residues surrounding S492/S494 of Human Phospho-BRD4-S492/S494.
Immunogen Region	
Specificity	
Immunogen Sequence	



Dot-blot analysis of all sorts of peptides using Phospho-BRD4-S492/S494 antibody (STJ11102665) at 1:1000 dilution.

This product is suitable for in-vitro studies under the RESEARCH USE ONLY [RUO] licence. This product must not be used as for diagnostic or other medical purposes.
 St John's Laboratory Ltd, Knowledge Dock Business Centre, University Way, London, E16 2RD | Tel: 0208 223 3081