

Anti-Phospho-AKT1/AKT2/AKT3-T308/T309/T305 antibody (STJ11102660)

STJ11102660

GENERAL INFORMATION

Product Type	Primary antibodies
Short Description	Rabbit polyclonal antibody anti-Phospho-AKT1/AKT2/AKT3-T308/T309/T305 is suitable for use in Western Blot.
Applications	WB
Host/Source	Rabbit
Reactivity	Human, Mouse

PRODUCT PROPERTIES

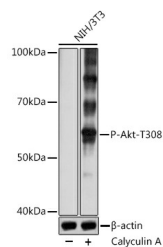
Clonality	Polyclonal
Clone ID	
Concentration	
Conjugation	Unconjugated
Purification	Affinity purification
Dilution Range	WB 1:500-1:2000
Formulation	PBS containing 0.02% Sodium Azide, 50% Glycerol, pH7.3.
Isotype	IgG
Storage	Store in a freezer at -20°C and avoid freeze-thaw cycles.
Instruction	

TARGET INFORMATION

Gene ID	208
	10000
	207
	AKT2
	AKT3
	AKT2_HUMAN
	AKT3_HUMAN
	AKT1_HUMAN
	<

Immunogen A phospho synthetic peptide corresponding to residues surrounding T308 of human AKT1. This antibody also recognizes Phospho-Akt2 (Thr309) and Phospho-Akt3 (Thr309).

Immunogen Region
Specificity
Immunogen Sequence



Western blot analysis of extracts of NIH/3T3 cells, using Phospho-Akt-T308 antibody (STJ11102660) at 1:1000 dilution. NIH/3T3 cells were treated by Calyculin A (100 nM) at 37 °C for 30 minutes after serum-starvation overnight. Secondary antibody: HRP Goat Anti-rabbit IgG (H+L) at 1:10000 dilution. Lysates/proteins: 25µg per lane. Blocking buffer: 3% nonfat dry milk in TBST. Detection: ECL Basic Kit. Exposure time: 3s.

This product is suitable for in-vitro studies under the RESEARCH USE ONLY [RUO] licence. This product must not be used as for diagnostic or other medical purposes.

St John's Laboratory Ltd, Knowledge Dock Business Centre, University Way, London, E16 2RD | Tel: 0208 223 3081