

Anti-Phospho-KRAS-S89 antibody (STJ11102656)

STJ11102656

GENERAL INFORMATION

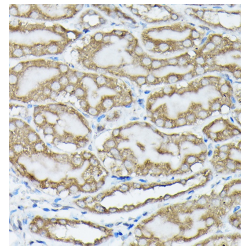
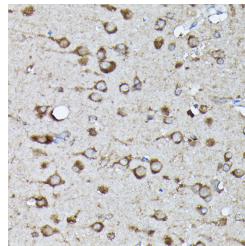
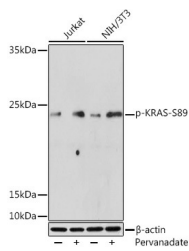
Product Type	Primary antibodies
Short Description	Rabbit polyclonal antibody anti-Phospho-KRAS-S89 is suitable for use in Western Blot and Immunohistochemistry.
Applications	WB, IHC
Host/Source	Rabbit
Reactivity	Human, Mouse, Rat

PRODUCT PROPERTIES

Clonality	Polyclonal
Clone ID	
Concentration	
Conjugation	Unconjugated
Purification	Affinity purification
Dilution Range	WB 1:500-1:2000 IHC 1:50-1:200
Formulation	PBS containing 0.02% Sodium Azide, 50% Glycerol, pH7.3.
Isotype	IgG
Storage Instruction	Store in a freezer at -20°C and avoid freeze-thaw cycles.

TARGET INFORMATION

Gene ID	3845
Gene Symbol	KRAS
Uniprot ID	RASK_HUMAN
Immunogen	A phospho specific peptide corresponding to residues surrounding S89 of human KRAS.
Immunogen Region	
Specificity	
Immunogen Sequence	



This product is suitable for in-vitro studies under the RESEARCH USE ONLY [RUO] licence. This product must not be used as for diagnostic or other medical purposes.
 St John's Laboratory Ltd, Knowledge Dock Business Centre, University Way, London, E16 2RD | Tel: 0208 223 3081