

Anti-Phospho-MAPK14/MAPK11/MAPK13/MAPK12-T180/Y182 antibody (STJ11102653)

STJ11102653

GENERAL INFORMATION

Product Type	Primary antibodies
Short Description	Rabbit polyclonal antibody anti-Phospho-p38 MAPK-T180/Y182 is suitable for use in Western Blot.
Applications	WB
Host/Source	Rabbit
Reactivity	Human, Mouse

PRODUCT PROPERTIES

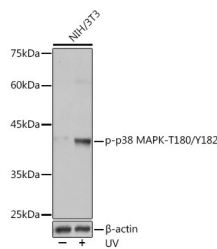
Clonality	Polyclonal
Clone ID	
Concentration	
Conjugation	Unconjugated
Purification	Affinity purification
Dilution Range	WB 1:500-1:2000
Formulation	PBS containing 0.02% Sodium Azide, 50% Glycerol, pH7.3.
Isotype	IgG
Storage Instruction	Store in a freezer at -20°C and avoid freeze-thaw cycles.

TARGET INFORMATION

Gene ID [5600](#)
[1432](#)
[6300](#)
[MAPK11](#)
[MAPK14](#)
[MK11_HUMAN](#)
[MK14_HUMAN](#)
[MK12_HUMAN](#)

<

Immunogen A synthetic phosphorylated peptide around T180 & Y182 of human MAPK11/MAPK14/MAPK12 (NP_002742.3).
Immunogen Region
Specificity
Immunogen Sequence



Western blot analysis of extracts of NIH/3T3 cells, using Phospho-p38 MAPK-T180/Y182 antibody (STJ11102653) at 1:500 dilution. NIH/3T3 cells were treated by UV at room temperature for 15-30 minutes. Secondary antibody: HRP Goat Anti-rabbit IgG (H+L) at 1:10000 dilution. Lysates/proteins: 25µg per lane. Blocking buffer: 3% BSA. Detection: ECL Enhanced Kit. Exposure time: 3s.

This product is suitable for in-vitro studies under the RESEARCH USE ONLY [RUO] licence. This product must not be used as for diagnostic or other medical purposes.
 St John's Laboratory Ltd, Knowledge Dock Business Centre, University Way, London, E16 2RD | Tel: 0208 223 3081