

Anti-Phospho-PPP1R12A/PPP1R12B/PPP1R12C-T696 antibody (STJ11102652)

STJ11102652

GENERAL INFORMATION

Product Type	Primary antibodies
Short Description	Rabbit polyclonal antibody anti-Phospho-PPP1R12A/PPP1R12B/PPP1R12C-T696 is suitable for use in Western Blot.
Applications	WB
Host/Source	Rabbit
Reactivity	Human

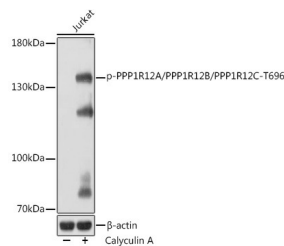
PRODUCT PROPERTIES

Clonality	Polyclonal
Clone ID	
Concentration	
Conjugation	Unconjugated
Purification	Affinity purification
Dilution Range	WB 1:500-1:2000
Formulation	PBS containing 0.02% Sodium Azide, 50% Glycerol, pH7.3.
Isotype	IgG
Storage Instruction	Store in a freezer at -20°C and avoid freeze-thaw cycles.

TARGET INFORMATION

Gene ID	4659
	4660
	54776
	PPP1R12A
	PPP1R12B
	MYPT1_HUMAN
	MYPT2_HUMAN
	PP12C_HUMAN

Immunogen A synthetic phosphorylated peptide around T696 of human PPP1R12A/PPP1R12B/PPP1R12C.
Immunogen Region
Specificity
Immunogen Sequence



Western blot analysis of extracts of Jurkat cells, using Phospho-PPP1R12A/PPP1R12B/PPP1R12C-T696 rabbit polyclonal antibody (STJ11102652) at 1:1000 dilution. Jurkat cells were treated by Calyculin A (100 nM) at 37 °C for 30 minutes after serum-starvation overnight. Secondary antibody: HRP Goat Anti-rabbit IgG (H+L) at 1:10000 dilution. Lysates/proteins: 25µg per lane. Blocking buffer: 3% BSA. Detection: ECL Basic Kit. Exposure time: 1s.

This product is suitable for in-vitro studies under the RESEARCH USE ONLY [RUO] licence. This product must not be used as for diagnostic or other medical purposes.
 St John's Laboratory Ltd, Knowledge Dock Business Centre, University Way, London, E16 2RD | Tel: 0208 223 3081