

Anti-Phospho-LIPE-S853 antibody [ARC1657] (STJ11102644)

STJ11102644

GENERAL INFORMATION

Product Type	Primary antibodies
Short Description	Rabbit monoclonal antibody anti-Phospho-HSL-S853 is suitable for use in Western Blot.
Applications	WB
Host/Source	Rabbit
Reactivity	Human, Mouse

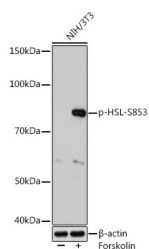
PRODUCT PROPERTIES

Clonality	Monoclonal
Clone ID	ARC1657
Concentration	
Conjugation	Unconjugated
Purification	Affinity purification
Dilution Range	WB 1:500-1:2000
Formulation	PBS containing 0.02% Sodium Azide, 0.05% BSA, 50% Glycerol, pH7.3.
Isotype	IgG
Storage Instruction	Store in a freezer at -20°C and avoid freeze-thaw cycles.

TARGET INFORMATION

Gene ID	3991
Gene Symbol	LIPE
Uniprot ID	LIPS_HUMAN
Immunogen	A phospho specific peptide corresponding to residues surrounding S853 of human HSL (NP_005348.2, equivalent to S563 of rat HSL)

Immunogen Region
Specificity
Immunogen
Sequence



Western blot analysis of extracts of NIH/3T3 cells, using Phospho-HSL-S853 rabbit monoclonal antibody (STJ11102644) at 1:1000 dilution. NIH/3T3 cells were treated by Forskolin (30 μ M) at 37 °C for 30 minutes after serum-starvation overnight. Secondary antibody: HRP Goat Anti-rabbit IgG (H+L) at 1:10000 dilution. Lysates/proteins: 25 μ g per lane. Blocking buffer: 3% BSA. Detection: ECL Basic Kit. Exposure time: 3min.

This product is suitable for in-vitro studies under the RESEARCH USE ONLY [RUO] licence. This product must not be used as for diagnostic or other medical purposes.
 St John's Laboratory Ltd, Knowledge Dock Business Centre, University Way, London, E16 2RD | Tel: 0208 223 3081