

Anti-Phospho-JUND-S255 antibody [ARC1603] (STJ11102638)

STJ11102638

GENERAL INFORMATION

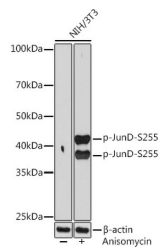
Product Type	Primary antibodies
Short Description	Rabbit monoclonal antibody anti-Phospho-JunD-S255 is suitable for use in Western Blot.
Applications	WB
Host/Source	Rabbit
Reactivity	Human, Mouse

PRODUCT PROPERTIES

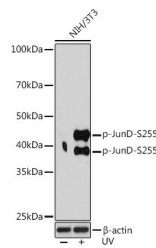
Clonality	Monoclonal
Clone ID	ARC1603
Concentration	
Conjugation	Unconjugated
Purification	Affinity purification
Dilution Range	WB 1:500-1:2000
Formulation	PBS containing 0.02% Sodium Azide, 0.05% BSA, 50% Glycerol, pH7.3.
Isotype	IgG
Storage Instruction	Store in a freezer at -20°C and avoid freeze-thaw cycles.

TARGET INFORMATION

Gene ID	3727
Gene Symbol	JUND
Uniprot ID	JUND_HUMAN
Immunogen	A phospho specific peptide corresponding to residues surrounding S255 of human Phospho-JunD-S255
Immunogen Region	
Specificity	
Immunogen Sequence	



Western blot analysis of extracts of NIH/3T3 cells, using Phospho-JunD-S255 rabbit monoclonal antibody (STJ11102638) at 1:1000 dilution. NIH/3T3 cells were treated by Anisomycin (25 µg/mL) at 37 °C for 30 minutes. Secondary antibody: HRP Goat Anti-rabbit IgG (H+L) at 1:10000 dilution. Lysates/proteins: 25µg per lane. Blocking buffer: 3% BSA. Detection: ECL Basic Kit. Exposure time: 90s.



Western blot analysis of extracts of NIH/3T3 cells, using Phospho-JunD-S255 rabbit monoclonal antibody (STJ11102638) at 1:1000 dilution. NIH/3T3 cells were treated by UV at room temperature for 15-30 minutes. Secondary antibody: HRP Goat Anti-rabbit IgG (H+L) at 1:10000 dilution. Lysates/proteins: 25µg per lane. Blocking buffer: 3% BSA. Detection: ECL Enhanced Kit. Exposure time: 3min.

This product is suitable for in-vitro studies under the RESEARCH USE ONLY [RUO] licence. This product must not be used as for diagnostic or other medical purposes.
 St John's Laboratory Ltd, Knowledge Dock Business Centre, University Way, London, E16 2RD | Tel: 0208 223 3081