

Anti-Phospho-PDHA1-S293 antibody [ARC1567] (STJ11102604)

STJ11102604

GENERAL INFORMATION

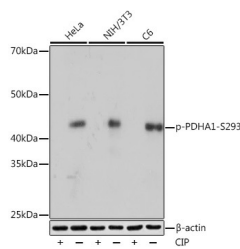
Product Type	Primary antibodies
Short Description	Rabbit monoclonal antibody anti-Phospho-PDHA1-S293 is suitable for use in Western Blot, Immunofluorescence and Immunoprecipitation.
Applications	WB, IF, IP
Host/Source	Rabbit
Reactivity	Human, Mouse, Rat

PRODUCT PROPERTIES

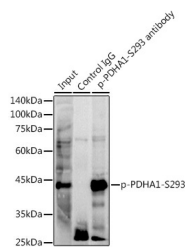
Clonality	Monoclonal
Clone ID	ARC1567
Concentration	
Conjugation	Unconjugated
Purification	Affinity purification
Dilution Range	WB 1:500-1:2000 IF 1:50-1:200 IP 1:50-1:200
Formulation	PBS containing 0.02% Sodium Azide, 0.05% BSA, 50% Glycerol, pH7.3.
Isotype	IgG
Storage Instruction	Store in a freezer at -20°C and avoid freeze-thaw cycles.

TARGET INFORMATION

Gene ID	5160
Gene Symbol	PDHA1
Uniprot ID	ODPA_HUMAN
Immunogen	A phospho specific peptide corresponding to residues surrounding S293 of human PDHA1
Immunogen Region	
Specificity	
Immunogen Sequence	



Western blot analysis of extracts of various cell lines, using Phospho-PDHA1-S293 rabbit monoclonal antibody (STJ11102604) at 1:1000 dilution. HeLa cells and NIH/3T3 cells and C6 cells were treated by CIP (20uL/400uL) at 37 °C for 1 hour. Secondary antibody: HRP-Goat Anti-rabbit IgG (H+L) at 1:10000 dilution. Lysates/proteins: 25ug per lane. Blocking buffer: 3% BSA. Detection: ECL Basic Kit. Exposure time: 3s.



Immunoprecipitation analysis of 300ug extracts of NIH/3T3 cells using 3ug Phospho-PDHA1-S293 antibody (STJ11102604). Western blot was performed from the immunoprecipitate using Phospho-PDHA1-S293 antibody (STJ11102604) at a dilution of 1:1000.