

Anti-Phospho-BAD-S112 antibody [ARC1555] (STJ11102596)

STJ11102596

GENERAL INFORMATION

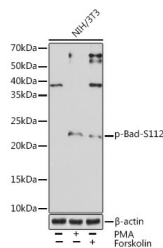
Product Type	Primary antibodies
Short Description	Rabbit monoclonal antibody anti-Phospho-Bad-S112 is suitable for use in Western Blot.
Applications	WB
Host/Source	Rabbit
Reactivity	Human, Mouse

PRODUCT PROPERTIES

Clonality	Monoclonal
Clone ID	ARC1555
Concentration	
Conjugation	Unconjugated
Purification	Affinity purification
Dilution Range	WB 1:500-1:2000
Formulation	PBS containing 0.02% Sodium Azide, 0.05% BSA, 50% Glycerol, pH7.3.
Isotype	IgG
Storage Instruction	Store in a freezer at -20°C and avoid freeze-thaw cycles.

TARGET INFORMATION

Gene ID	572
Gene Symbol	BAD
Uniprot ID	BAD_HUMAN
Immunogen	A phospho specific peptide corresponding to residues surrounding S112 of human Bad
Immunogen Region	
Specificity	
Immunogen Sequence	



Western blot analysis of extracts of NIH/3T3 cells, using Phospho-Bad-S112 rabbit monoclonal antibody (STJ11102596) at 1:1000 dilution. NIH/3T3 cells were treated by PMA/TPA (200 nM) at 37 °C for 30 minutes after serum-starvation overnight or treated by Forskolin (30 uM) at 37 °C for 30 minutes after serum-starvation overnight. Secondary antibody: HRP Goat Anti-rabbit IgG (H+L) at 1:10000 dilution. Lysates/proteins: 25µg per lane. Blocking buffer: 3% BSA. Detection: ECL Enhanced Kit. Exposure time: 3min.

This product is suitable for in-vitro studies under the RESEARCH USE ONLY [RUO] licence. This product must not be used as for diagnostic or other medical purposes.
 St John's Laboratory Ltd, Knowledge Dock Business Centre, University Way, London, E16 2RD | Tel: 0208 223 3081