

Anti-Phospho-RPS6KB1-T421/S424 antibody [ARC0107] (STJ11102558)

STJ11102558

GENERAL INFORMATION

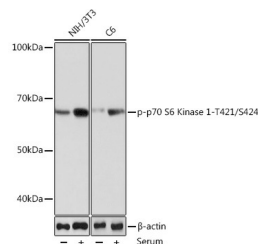
Product Type	Primary antibodies
Short Description	Rabbit monoclonal antibody anti-Phospho-P70 S6K-T421/S424 is suitable for use in Western Blot, Immunohistochemistry and Immunofluorescence.
Applications	WB, IHC, IF
Host/Source	Rabbit
Reactivity	Human, Mouse, Rat

PRODUCT PROPERTIES

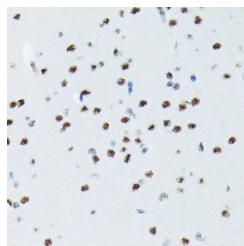
Clonality	Monoclonal
Clone ID	ARC0107
Concentration	
Conjugation	Unconjugated
Purification	Affinity purification
Dilution Range	WB 1:500-1:2000 IHC 1:50-1:200 IF 1:50-1:200
Formulation	PBS containing 0.02% Sodium Azide, 0.05% BSA, 50% Glycerol, pH7.3.
Isotype	IgG
Storage Instruction	Store in a freezer at -20°C and avoid freeze-thaw cycles.

TARGET INFORMATION

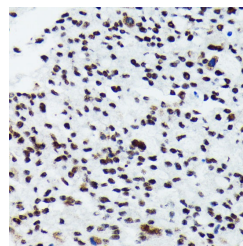
Gene ID	6198
Gene Symbol	RPS6KB1
Uniprot ID	KS6B1_HUMAN
Immunogen	A synthesized peptide derived from human Phospho-S6K1 (T421 + S424).
Immunogen Region	
Specificity	
Immunogen Sequence	



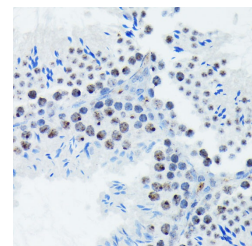
Western blot analysis of extracts of various cell lines, using Phospho-p70 S6 Kinase 1-T421/S424 rabbit monoclonal antibody (STJ11102558) at 1:1000 dilution. NIH/3T3 and C6 cells were treated by 10% FBS at 37 °C for 30 minutes after serum-starvation overnight. Secondary antibody: HRP Goat Anti-rabbit IgG (H+L) at 1:10000 dilution. Lysates/proteins: 25ug per lane. Blocking buffer: 3% nonfat dry milk in TBST. Detection: ECL Basic Kit. Exposure time: 60S.



Immunohistochemistry of paraffin-embedded rat brain using Phospho-p70 S6 Kinase 1-T421/S424 antibody (STJ11102558) at dilution of 1:100 (40x lens).



Immunohistochemistry of paraffin-embedded human oophora using Phospho-p70 S6 Kinase 1-T421/S424 antibody (STJ11102558) at dilution of 1:100 (40x lens).



Immunohistochemistry of paraffin-embedded mouse testis using Phospho-p70 S6 Kinase 1-T421/S424 antibody (STJ11102558) at dilution of 1:100 (40x lens).

This product is suitable for in-vitro studies under the RESEARCH USE ONLY [RUO] licence. This product must not be used as for diagnostic or other medical purposes.

St John's Laboratory Ltd, Knowledge Dock Business Centre, University Way, London, E16 2RD | Tel: 0208 223 3081