

Anti-Phospho-ERK1/ERK2-T202/T185 antibody [ARC0100] (STJ11102556)

STJ11102556

GENERAL INFORMATION

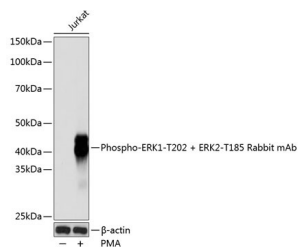
Product Type	Primary antibodies
Short Description	Rabbit monoclonal antibody anti-Phospho-ERK1/ERK2-T202/T185 is suitable for use in Western Blot and Immunohistochemistry.
Applications	WB, IHC
Host/Source	Rabbit
Reactivity	Human, Mouse, Rat

PRODUCT PROPERTIES

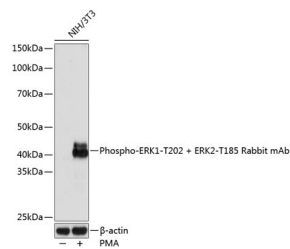
Clonality	Monoclonal
Clone ID	ARC0100
Concentration	
Conjugation	Unconjugated
Purification	Affinity purification
Dilution Range	WB 1:500-1:2000 IHC 1:50-1:200
Formulation	PBS containing 0.02% Sodium Azide, 0.05% BSA, 50% Glycerol, pH7.3.
Isotype	IgG
Storage Instruction	Store in a freezer at -20°C and avoid freeze-thaw cycles.

TARGET INFORMATION

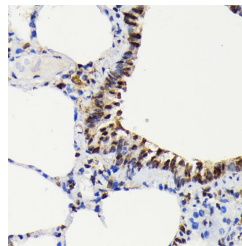
Gene ID	5594 5595
Gene Symbol	MAPK1 MAPK3
Uniprot ID	MK01_HUMAN MK03_HUMAN
Immunogen	A synthesized peptide derived from human Phospho-ERK1 (T202) + ERK2 (T185).
Immunogen Region	
Specificity	
Immunogen Sequence	



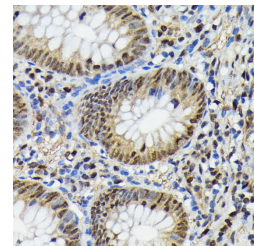
Western blot analysis of extracts of Jurkat cells, using Phospho-ERK1-T202 + ERK2-T185 rabbit monoclonal antibody (STJ11102556) at 1:1000 dilution. Jurkat cells were treated by PMA/TPA (200 nM) at 37 °C for 10 minutes. Secondary antibody: HRP Goat Anti-rabbit IgG (H+L) at 1:10000 dilution. Lysates/proteins: 25ug per lane. Blocking buffer: 3% nonfat dry milk in TBST. Detection: ECL Basic Kit. Exposure time: 10s.



Western blot analysis of extracts of NIH/3T3 cells, using Phospho-ERK1-T202 + ERK2-T185 rabbit monoclonal antibody (STJ11102556) at 1:1000 dilution. NIH/3T3 cells were treated by PMA/TPA (200 nM) at 37 °C for 30 minutes after serum-starvation overnight. Secondary antibody: HRP Goat Anti-rabbit IgG (H+L) at 1:10000 dilution. Lysates/proteins: 25ug per lane. Blocking buffer: 3% nonfat dry milk in TBST. Detection: ECL Basic Kit. Exposure time: 1S.



Immunohistochemistry of paraffin-embedded rat lung using Phospho-ERK1-T202 + ERK2-T185 antibody (STJ11102556) at dilution of 1:100 (40x lens).



Immunohistochemistry of paraffin-embedded human appendix using Phospho-ERK1-T202 + ERK2-T185 antibody (STJ11102556) at dilution of 1:100 (40x lens).

This product is suitable for in-vitro studies under the RESEARCH USE ONLY [RUO] licence. This product must not be used as for diagnostic or other medical purposes.
St John's Laboratory Ltd, Knowledge Dock Business Centre, University Way, London, E16 2RD | Tel: 0208 223 3081