

Anti-CD3D antibody [ARC1741] (STJ11102545)

STJ11102545

GENERAL INFORMATION

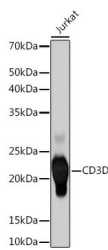
| | |
|--------------------------|--|
| Product Type | Primary antibodies |
| Short Description | Rabbit monoclonal antibody anti-CD3D is suitable for use in Western Blot, Immunofluorescence and Flow Cytometry. |
| Applications | WB, IF, FC |
| Host/Source | Rabbit |
| Reactivity | Human, Mouse, Rat |

PRODUCT PROPERTIES

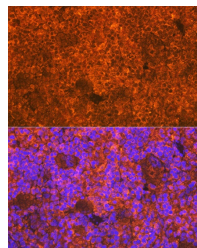
| | |
|----------------------------|--|
| Clonality | Monoclonal |
| Clone ID | ARC1741 |
| Concentration | |
| Conjugation | Unconjugated |
| Purification | Affinity purification |
| Dilution Range | WB 1:500-1:2000 IF 1:50-1:200 FC 1:50-1:200 |
| Formulation | PBS containing 0.02% Sodium Azide, 0.05% BSA, 50% Glycerol, pH7.3. |
| Isotype | IgG |
| Storage Instruction | Store in a freezer at -20°C and avoid freeze-thaw cycles. |

TARGET INFORMATION

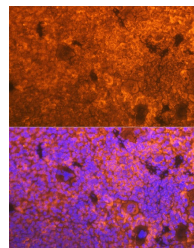
| | |
|---------------------------|---|
| Gene ID | 915 |
| Gene Symbol | CD3D |
| Uniprot ID | CD3D_HUMAN |
| Immunogen | A synthesized peptide derived from human CD3D |
| Immunogen Region | |
| Specificity | |
| Immunogen Sequence | |



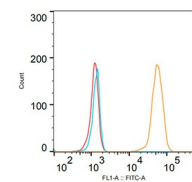
Western blot analysis of extracts of Jurkat cells, using CD3D rabbit monoclonal antibody (STJ11102545) at 1:500 dilution. Secondary antibody: HRP Goat Anti-rabbit IgG (H+L) at 1:10000 dilution. Lysates/proteins: 25µg per lane. Blocking buffer: 3% nonfat dry milk in TBST. Detection: ECL Basic Kit. Exposure time: 50s.



Immunofluorescence analysis of rat spleen using CD3D rabbit monoclonal antibody (STJ11102545) at dilution of 1:100 (40x lens). Blue: DAPI for nuclear staining.



Immunofluorescence analysis of mouse spleen using CD3D rabbit monoclonal antibody (STJ11102545) at dilution of 1:100 (40x lens). Blue: DAPI for nuclear staining.



| Sample Name | Subst Name | Count |
|------------------|--------------|-------|
| CD3D-APC-CD3D-10 | Sample Cells | 4001 |
| CD3D-APC-AC-10 | Sample Cells | 201 |
| CD3D-APC-10 | Sample Cells | 201 |

Flow cytometry: Jurkat cells were stained with rabbit IgG isotype control (AC042, 10 µg/ml, blue line) or CD3D rabbit monoclonal antibody (STJ11102545, 2.5 µg/ml orange line) - followed by goat anti-rabbit polyclonal antibody FITC (1:200 dilution) staining. Non-fluorescently stained Jurkat cells was used as blank control (red line).

This product is suitable for in-vitro studies under the RESEARCH USE ONLY [RUO] licence. This product must not be used as for diagnostic or other medical purposes.
St John's Laboratory Ltd, Knowledge Dock Business Centre, University Way, London, E16 2RD | Tel: 0208 223 3081