

Anti-PIAS1/PIAS2 antibody [ARC1690] (STJ11102524)

STJ11102524

GENERAL INFORMATION

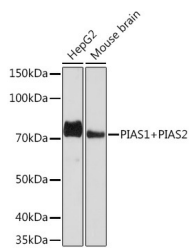
Product Type	Primary antibodies
Short Description	Rabbit monoclonal antibody anti-PIAS1+PIAS2 is suitable for use in Western Blot and Immunohistochemistry.
Applications	WB, IHC
Host/Source	Rabbit
Reactivity	Human, Mouse, Rat

PRODUCT PROPERTIES

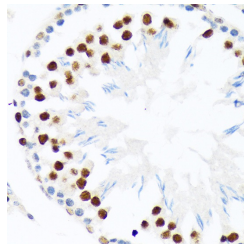
Clonality	Monoclonal
Clone ID	ARC1690
Concentration	
Conjugation	Unconjugated
Purification	Affinity purification
Dilution Range	WB 1:500-1:2000 IHC 1:50-1:200
Formulation	PBS containing 0.02% Sodium Azide, 0.05% BSA, 50% Glycerol, pH7.3.
Isotype	IgG
Storage Instruction	Store in a freezer at -20°C and avoid freeze-thaw cycles.

TARGET INFORMATION

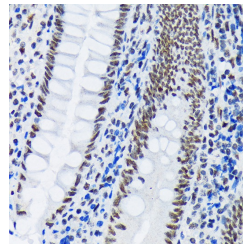
Gene ID	9063 8554
Gene Symbol	PIAS2 PIAS1
Uniprot ID	PIAS2_HUMAN PIAS1_HUMAN
Immunogen	A synthesized peptide derived from human PIAS1+PIAS2
Immunogen Region	
Specificity	
Immunogen Sequence	



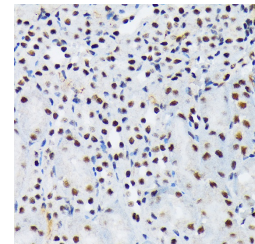
Western blot analysis of extracts of various cell lines, using PIAS1+PIAS2 rabbit monoclonal antibody (STJ11102524) at 1:1000 dilution. Secondary antibody: HRP Goat Anti-rabbit IgG (H+L) at 1:10000 dilution. Lysates/proteins: 25ug per lane. Blocking buffer: 3% nontat dry milk in TBST. Detection: ECL Basic Kit. Exposure time: 90s.



Immunohistochemistry of paraffin-embedded rat testis using PIAS1+PIAS2 rabbit monoclonal antibody (STJ11102524) at dilution of 1:100 (40x lens).



Immunohistochemistry of paraffin-embedded human appendix using PIAS1+PIAS2 rabbit monoclonal antibody (STJ11102524) at dilution of 1:100 (40x lens).



Immunohistochemistry of paraffin-embedded mouse kidney using PIAS1+PIAS2 rabbit monoclonal antibody (STJ11102524) at dilution of 1:100 (40x lens).

This product is suitable for in-vitro studies under the RESEARCH USE ONLY [RUO] licence. This product must not be used as for diagnostic or other medical purposes.

St John's Laboratory Ltd, Knowledge Dock Business Centre, University Way, London, E16 2RD | Tel: 0208 223 3081