

## Anti-AHSA1 antibody [ARC1623] (STJ11102485)

STJ11102485

### GENERAL INFORMATION

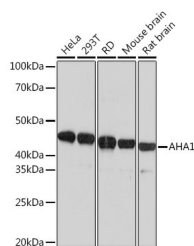
|                          |   |
|--------------------------|---|
| <b>Product Type</b>      | Primary antibodies  |
| <b>Short Description</b> | Rabbit monoclonal antibody anti-AHA1 is suitable for use in Western Blot. |
| <b>Applications</b>      | WB  |
| <b>Host/Source</b>       | Rabbit  |
| <b>Reactivity</b>        | Human, Mouse, Rat   |

### PRODUCT PROPERTIES

|                            |  |
|----------------------------|--|
| <b>Clonality</b>           | Monoclonal   |
| <b>Clone ID</b>            | ARC1623  |
| <b>Concentration</b>       |  |
| <b>Conjugation</b>         | Unconjugated   |
| <b>Purification</b>        | Affinity purification  |
| <b>Dilution Range</b>      | WB 1:500-1:2000  |
| <b>Formulation</b>         | PBS containing 0.02% Sodium Azide, 0.05% BSA, 50% Glycerol, pH7.3. |
| <b>Isotype</b>             | IgG  |
| <b>Storage Instruction</b> | Store in a freezer at -20°C and avoid freeze-thaw cycles.          |

### TARGET INFORMATION

|                           |   |
|---------------------------|---|
| <b>Gene ID</b>            | <a href="#">10598</a>                         |
| <b>Gene Symbol</b>        | <a href="#">AHSA1</a>                         |
| <b>Uniprot ID</b>         | <a href="#">AHSA1_HUMAN</a>                   |
| <b>Immunogen</b>          | A synthesized peptide derived from human AHA1 |
| <b>Immunogen Region</b>   |   |
| <b>Specificity</b>        |   |
| <b>Immunogen Sequence</b> |   |



This product is suitable for in-vitro studies under the RESEARCH USE ONLY [RUO] licence. This product must not be used as for diagnostic or other medical purposes.  
St John's Laboratory Ltd, Knowledge Dock Business Centre, University Way, London, E16 2RD | Tel: 0208 223 3081