

Anti-PSMA2 antibody [ARC1465] (STJ11102447)

STJ11102447

GENERAL INFORMATION

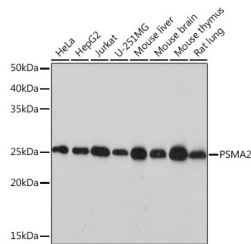
Product Type	Primary antibodies
Short Description	Rabbit monoclonal antibody anti-PSMA2 is suitable for use in Western Blot, Immunohistochemistry and Immunofluorescence.
Applications	WB, IHC, IF
Host/Source	Rabbit
Reactivity	Human, Mouse, Rat

PRODUCT PROPERTIES

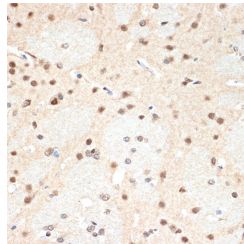
Clonality	Monoclonal
Clone ID	ARC1465
Concentration	
Conjugation	Unconjugated
Purification	Affinity purification
Dilution Range	WB 1:500-1:2000 IHC 1:50-1:200 IF 1:50-1:200
Formulation	PBS containing 0.02% Sodium Azide, 0.05% BSA, 50% Glycerol, pH7.3.
Isotype	IgG
Storage Instruction	Store in a freezer at -20°C and avoid freeze-thaw cycles.

TARGET INFORMATION

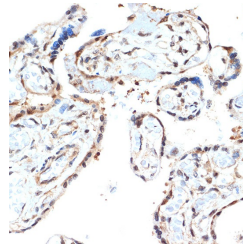
Gene ID	5683
Gene Symbol	PSMA2
Uniprot ID	PSA2_HUMAN
Immunogen	A synthesized peptide derived from human PSMA2
Immunogen Region	
Specificity	
Immunogen Sequence	



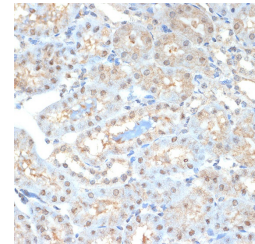
Western blot analysis of extracts of various cell lines, using PSMA2 rabbit monoclonal antibody (STJ11102447) at 1:1000 dilution. Secondary antibody: HRP Goat Anti-rabbit IgG (H+L) at 1:10000 dilution. Lysates/proteins: 25ug per lane. Blocking buffer: 3% nonfat dry milk in TBST. Detection: ECL Basic Kit. Exposure time: 10s.



Immunohistochemistry of paraffin-embedded rat brain using PSMA2 rabbit monoclonal antibody (STJ11102447) at dilution of 1:100 (40x lens).



Immunohistochemistry of paraffin-embedded human placenta using PSMA2 rabbit monoclonal antibody (STJ11102447) at dilution of 1:100 (40x lens).



Immunohistochemistry of paraffin-embedded mouse kidney using PSMA2 rabbit monoclonal antibody (STJ11102447) at dilution of 1:100 (40x lens).