

Anti-C3 antibody (1364-1663) (STJ11102332)

STJ11102332

GENERAL INFORMATION

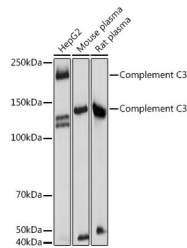
Product Type	Primary antibodies
Short Description	Rabbit polyclonal antibody anti-C3/C3a (1364-1663) is suitable for use in Western Blot, Immunohistochemistry and Immunofluorescence.
Applications	WB, IHC, IF
Host/Source	Rabbit
Reactivity	Human, Mouse, Rat

PRODUCT PROPERTIES

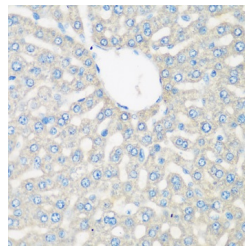
Clonality	Polyclonal
Clone ID	
Concentration	
Conjugation	Unconjugated
Purification	Affinity purification
Dilution Range	WB 1:500-1:2000 IHC 1:50-1:100 IF 1:50-1:100
Formulation	PBS containing 0.02% Sodium Azide, 50% Glycerol, pH7.3.
Isotype	IgG
Storage Instruction	Store in a freezer at -20°C and avoid freeze-thaw cycles.

TARGET INFORMATION

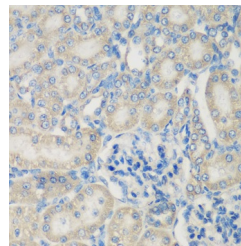
Gene ID	718
Gene Symbol	C3
Uniprot ID	CO3_HUMAN
Immunogen	Recombinant fusion protein containing a sequence corresponding to amino acids 1364-1663 of human Complement C3 (NP_000055.2).
Immunogen Region	1364-1663
Specificity	
Immunogen Sequence	



Western blot analysis of extracts of various cell lines, using Complement C3 antibody (STJ11102332) at 1:1000 dilution. Secondary antibody: HRP Goat Anti-rabbit IgG (H+L) at 1:10000 dilution. Lysates/proteins: 25µg per lane. Blocking buffer: 3% nonfat dry milk in TBST. Detection: ECL Basic Kit. Exposure time: 1s.



Immunohistochemistry of paraffin-embedded rat liver using Complement C3 antibody (STJ11102332) at dilution of 1:200 (40x lens).



Immunohistochemistry of paraffin-embedded rat kidney using Complement C3 antibody (STJ11102332) at dilution of 1:200 (40x lens).