

Anti-PP2A alpha + beta antibody [ARC1889] (STJ11102318)

STJ11102318

GENERAL INFORMATION

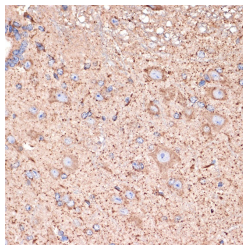
Product Type	Primary antibodies
Short Description	Rabbit monoclonal anti-PP2A alpha + beta antibody is suitable for use in Western Blot, Immunohistochemistry and Immunofluorescence.
Background Applications	WB, IHC, IF
Host/Source	Rabbit
Reactivity	Human, Mouse, Rat

PRODUCT PROPERTIES

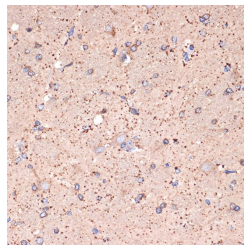
Clonality	Monoclonal
Clone ID	ARC1889
Concentration	
Conjugation	Unconjugated
Purification	Affinity purification
Dilution Range	WB: 1:500-1:2000 IHC: 1:50-1:200 IF: 1:50-1:200
Formulation	PBS with 0.02% sodium azide, 0.05% BSA, 50% glycerol, pH7.3.
Isotype	IgG
Storage Instruction	Store at -20°C. Avoid freeze/thaw cycles.

TARGET INFORMATION

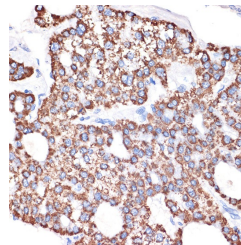
Gene ID	5515 5516
Gene Symbol	PPP2CA PPP2CB
Uniprot ID	PP2AA_HUMAN PP2AB_HUMAN
Immunogen	A synthesized peptide derived from human PP2A alpha + beta
Immunogen Region	
Specificity	
Immunogen Sequence	



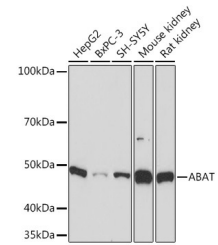
Immunohistochemistry of paraffin-embedded mouse spinal cord using ABAT Rabbit mAb (STJ11102318) at dilution of 1:100 (40x lens).



Immunohistochemistry of paraffin-embedded rat brain using ABAT Rabbit mAb (STJ11102318) at dilution of 1:100 (40x lens).



Immunohistochemistry of paraffin-embedded human liver cancer using ABAT Rabbit mAb (STJ11102318) at dilution of 1:100 (40x lens).



Western blot analysis of extracts of various cell lines, using ABAT Rabbit mAb (STJ11102318) at 1:1000 dilution. Secondary antibody: HRP-Goat Anti-Rabbit IgG (H+L) at 1:10000 dilution. Lysates/proteins: 25µg per lane. Blocking buffer: 3% nonfat dry milk in TBST. Detection: ECL Basic Kit. Exposure time: 10s.

This product is suitable for in-vitro studies under the RESEARCH USE ONLY [RUO] licence. This product must not be used as for diagnostic or other medical purposes.
St John's Laboratory Ltd, Knowledge Dock Business Centre, University Way, London, E16 2RD | Tel: 0208 223 3081 | Fax: 0207 681 2580