

Anti-RUNX1 antibody [ARC1162] (STJ11102260)

STJ11102260

GENERAL INFORMATION

Product Type	Primary antibodies
Short Description	Rabbit monoclonal antibody anti-RUNX1/2/3 is suitable for use in Western Blot.
Applications	WB
Host/Source	Rabbit
Reactivity	Human, Mouse

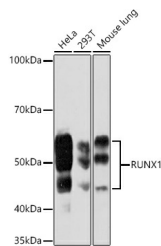
PRODUCT PROPERTIES

Clonality	Monoclonal
Clone ID	ARC1162
Concentration	
Conjugation	Unconjugated
Purification	Affinity purification
Dilution Range	WB 1:500-1:2000
Formulation	PBS containing 0.02% Sodium Azide, 0.05% BSA, 50% Glycerol, pH7.3.
Isotype	IgG
Storage Instruction	Store in a freezer at -20°C and avoid freeze-thaw cycles.

TARGET INFORMATION

Gene ID	860
	864
	861
	RUNX2
	RUNX3
	RUNX2_HUMAN
	RUNX3_HUMAN
	RUNX1_HUMAN

Immunogen A synthesized peptide derived from human RUNX1/2/3
Immunogen Region
Specificity
Immunogen Sequence



Western blot analysis of extracts of various cell lines, using RUNX1 rabbit monoclonal antibody (STJ11102260) at 1:1000 dilution. Secondary antibody: HRP Goat Anti-rabbit IgG (H+L) at 1:10000 dilution. Lysates/proteins: 25ug per lane. Blocking buffer: 3% nonfat dry milk in TBST. Detection: ECL Basic Kit. Exposure time: 90s.