

Anti-PER2 antibody [ARC1134] (STJ11102255)

STJ11102255

GENERAL INFORMATION

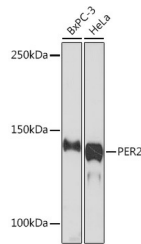
Product Type	Primary antibodies
Short Description	Rabbit monoclonal antibody anti-PER2 is suitable for use in Western Blot and Immunofluorescence.
Applications	WB, IF
Host/Source	Rabbit
Reactivity	Human, Mouse

PRODUCT PROPERTIES

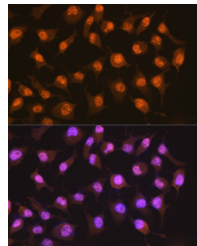
Clonality	Monoclonal
Clone ID	ARC1134
Concentration	
Conjugation	Unconjugated
Purification	Affinity purification
Dilution Range	WB 1:500-1:2000 IF 1:50-1:200 ChIP 1:50-1:200
Formulation	PBS containing 0.02% Sodium Azide, 0.05% BSA, 50% Glycerol, pH7.3.
Isotype	IgG
Storage Instruction	Store in a freezer at -20°C and avoid freeze-thaw cycles.

TARGET INFORMATION

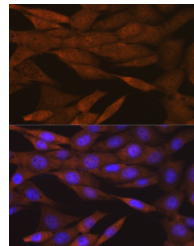
Gene ID	8864
Gene Symbol	PER2
Uniprot ID	PER2_HUMAN
Immunogen	A synthesized peptide derived from human PER2
Immunogen Region	
Specificity	
Immunogen Sequence	



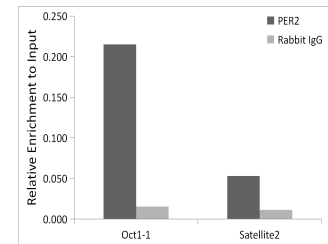
Western blot analysis of extracts of various cell lines, using PER2 rabbit monoclonal antibody (STJ11102255) at 1:1000 dilution. Secondary antibody: HRP Goat Anti-rabbit IgG (H+L) at 1:10000 dilution. Lysates/proteins: 25ug per lane. Blocking buffer: 3% nonfat dry milk in TBST. Detection: ECL Enhanced Kit. Exposure time: 3min.



Immunofluorescence analysis of HeLa cells using PER2 rabbit monoclonal antibody (STJ11102255) at dilution of 1:100 (40x lens). Blue: DAPI for nuclear staining.



Immunofluorescence analysis of NIH-3T3 cells using PER2 rabbit monoclonal antibody (STJ11102255) at dilution of 1:100 (40x lens). Blue: DAPI for nuclear staining.



Chromatin immunoprecipitation analysis of extracts of MCF7 cells, using PER2 antibody (STJ11102255) and rabbit IgG. The amount of immunoprecipitated DNA was checked by quantitative PCR. Histogram was constructed by the ratios of the immunoprecipitated DNA to the input.

This product is suitable for in-vitro studies under the RESEARCH USE ONLY [RUO] licence. This product must not be used as for diagnostic or other medical purposes.
St John's Laboratory Ltd, Knowledge Dock Business Centre, University Way, London, E16 2RD | Tel: 0208 223 3081