

## Anti-TEAD1 antibody [ARC1158] (STJ11102248)

STJ11102248

### GENERAL INFORMATION

<b>Product Type</b>	Primary antibodies
<b>Short Description</b>	Rabbit monoclonal antibody anti-TEAD1/2/3/4 is suitable for use in Western Blot.
<b>Applications</b>	WB
<b>Host/Source</b>	Rabbit
<b>Reactivity</b>	Human

### PRODUCT PROPERTIES

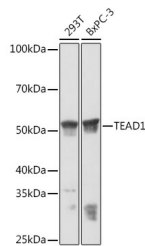
<b>Clonality</b>	Monoclonal
<b>Clone ID</b>	ARC1158
<b>Concentration</b>	
<b>Conjugation</b>	Unconjugated
<b>Purification</b>	Affinity purification
<b>Dilution Range</b>	WB 1:500-1:2000
<b>Formulation</b>	PBS containing 0.02% Sodium Azide, 0.05% BSA, 50% Glycerol, pH7.3.
<b>Isotype</b>	IgG
<b>Storage Instruction</b>	Store in a freezer at -20°C and avoid freeze-thaw cycles.

### TARGET INFORMATION

<b>Gene ID</b>	<a href="#">8463</a>
	<a href="#">7003</a>
	<a href="#">7004</a>
	<a href="#">TEAD2</a>
	<a href="#">TEAD1</a>
	<a href="#">TEAD2_HUMAN</a>
	<a href="#">TEAD1_HUMAN</a>
	<a href="#">TEAD4_HUMAN</a>

**Immunogen** A synthesized peptide derived from human TEAD1

**Immunogen Region**  
**Specificity**  
**Immunogen Sequence**



Western blot analysis of extracts of various cell lines, using TEAD1 rabbit monoclonal antibody (STJ11102248) at 1:3000 dilution. Secondary antibody: HRP Goat Anti-rabbit IgG (H+L) at 1:10000 dilution. Lysates/proteins: 25ug per lane. Blocking buffer: 3% nonfat dry milk in TBST. Detection: ECL Basic Kit. Exposure time: 1min.