

Anti-GCG antibody [ARC1142] (STJ11102210)

STJ11102210

GENERAL INFORMATION

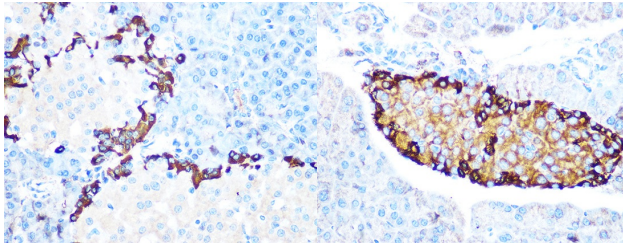
Product Type	Primary antibodies
Short Description	Rabbit monoclonal antibody anti-GLP1 is suitable for use in Immunohistochemistry and Immunofluorescence.
Applications	IHC, IF
Host/Source	Rabbit
Reactivity	Mouse, Rat

PRODUCT PROPERTIES

Clonality	Monoclonal
Clone ID	ARC1142
Concentration	
Conjugation	Unconjugated
Purification	Affinity purification
Dilution Range	IHC 1:50-1:200 IF 1:50-1:200
Formulation	PBS containing 0.02% Sodium Azide, 0.05% BSA, 50% Glycerol, pH7.3.
Isotype	IgG
Storage Instruction	Store in a freezer at -20°C and avoid freeze-thaw cycles.

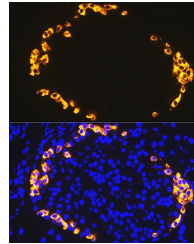
TARGET INFORMATION

Gene ID	2641
Gene Symbol	GCG
Uniprot ID	GLUC_HUMAN
Immunogen	A synthesized peptide derived from human GLP1
Immunogen Region	
Specificity	
Immunogen Sequence	

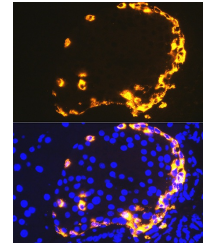


Immunohistochemistry of paraffin-embedded rat pancreas using GLP-1 rabbit monoclonal antibody (STJ11102210) at dilution of 1:100 (40x lens). Perform microwave antigen retrieval with 10 mM PBS buffer pH 7.2 before commencing with immunohistochemistry staining protocol.

Immunohistochemistry of paraffin-embedded mouse pancreas using GLP-1 rabbit monoclonal antibody (STJ11102210) at dilution of 1:100 (40x lens). Perform microwave antigen retrieval with 10 mM PBS buffer pH 7.2 before commencing with immunohistochemistry staining protocol.



Immunofluorescence analysis of rat pancreas using GLP-1 antibody (STJ11102210) at dilution of 1:100. Blue: DAPI for nuclear staining.



Immunofluorescence analysis of mouse pancreas using GLP-1 antibody (STJ11102210) at dilution of 1:100. Blue: DAPI for nuclear staining.

This product is suitable for in-vitro studies under the RESEARCH USE ONLY [RUO] licence. This product must not be used as for diagnostic or other medical purposes.
St John's Laboratory Ltd, Knowledge Dock Business Centre, University Way, London, E16 2RD | Tel: 0208 223 3081