

Anti-CDH1/CDH2/CDH3/CDH4 antibody [ARC1135] (STJ11102191)

STJ11102191

GENERAL INFORMATION

Product Type	Primary antibodies
Short Description	Rabbit monoclonal antibody anti-Pan Cadherin is suitable for use in Western Blot and Immunohistochemistry.
Applications	WB, IHC
Host/Source	Rabbit
Reactivity	Human, Mouse, Rat

PRODUCT PROPERTIES

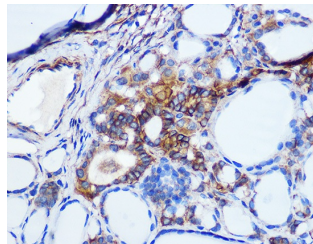
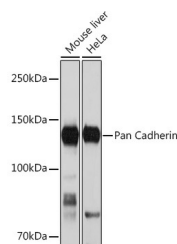
Clonality	Monoclonal
Clone ID	ARC1135
Concentration	
Conjugation	Unconjugated
Purification	Affinity purification
Dilution Range	WB 1:500-1:2000 IHC 1:50-1:200
Formulation	PBS containing 0.02% Sodium Azide, 0.05% BSA, 50% Glycerol, pH7.3.
Isotype	IgG
Storage Instruction	Store in a freezer at -20°C and avoid freeze-thaw cycles.

TARGET INFORMATION

Gene ID	999 12561 1000 CDH1 Cdh4 CADH1_HUMAN CADH4_MOUSE CADH2_HUMAN
----------------	---

Immunogen
Immunogen Region
Specificity
Immunogen Sequence

A synthesized peptide derived from human Pan Cadherin



Immunohistochemistry of paraffin-embedded human thyroid cancer using Pan Cadherin rabbit monoclonal antibody (STJ11102191) at dilution of 1:100 (40x lens). Perform microwave antigen retrieval with 10 mM PBS buffer pH 7.2 before commencing with immunohistochemistry staining protocol.

This product is suitable for in-vitro studies under the RESEARCH USE ONLY [RUO] licence. This product must not be used as for diagnostic or other medical purposes.
St John's Laboratory Ltd, Knowledge Dock Business Centre, University Way, London, E16 2RD | Tel: 0208 223 3081