

## Anti-RHOA/RHOB/RHOC antibody [ARC0273] (STJ11102169)

STJ11102169

### GENERAL INFORMATION

<b>Product Type</b>	Primary antibodies
<b>Short Description</b>	Rabbit monoclonal antibody anti-RHOA/RHOB/RHOC is suitable for use in Western Blot, Immunohistochemistry and Immunofluorescence.
<b>Applications</b>	WB, IHC, IF
<b>Host/Source</b>	Rabbit
<b>Reactivity</b>	Human, Mouse, Rat

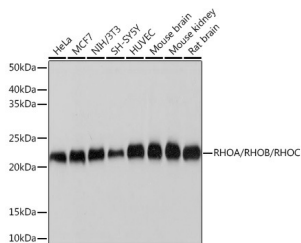
### PRODUCT PROPERTIES

<b>Clonality</b>	Monoclonal
<b>Clone ID</b>	ARC0273
<b>Concentration</b>	
<b>Conjugation</b>	Unconjugated
<b>Purification</b>	Affinity purification
<b>Dilution Range</b>	WB 1:500-1:2000 IHC 1:50-1:200 IF 1:50-1:200
<b>Formulation</b>	PBS containing 0.02% Sodium Azide, 0.05% BSA, 50% Glycerol, pH7.3.
<b>Isotype</b>	IgG
<b>Storage Instruction</b>	Store in a freezer at -20°C and avoid freeze-thaw cycles.

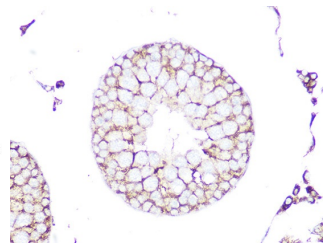
### TARGET INFORMATION

**Gene ID** [387](#)  
[389](#)  
[388](#)  
[RHOA](#)  
[RHOC](#)  
[RHOA\\_HUMAN](#)  
[RHOC\\_HUMAN](#)  
[RHOB\\_HUMAN](#)

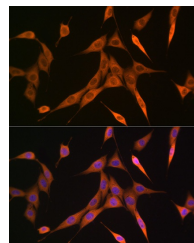
**Immunogen** A synthesized peptide derived from human RHOA/RHOB/RHOC  
**Immunogen Region**  
**Specificity**  
**Immunogen Sequence**



Western blot analysis of extracts of various cell lines, using RHOA/RHOB/RHOC rabbit monoclonal antibody (STJ11102169) at 1:1000 dilution. Secondary antibody: HRP-Goat Anti-rabbit IgG (H+L) at 1:10000 dilution. Lysates/proteins: 25µg per lane. Blocking buffer: 3% nonfat dry milk in TBST. Detection: ECL Basic Kit. Exposure time: 1s.



Immunohistochemistry of paraffin-embedded rat testis using RHOA/RHOB/RHOC rabbit monoclonal antibody (STJ11102169) at dilution of 1:100 (40x lens). Perform microwave antigen retrieval with 10 mM Tris/EDTA buffer, pH 9, 0 before commencing with immunohistochemistry staining protocol.



Immunofluorescence analysis of NIH-3T3 cells using RHOA/RHOB/RHOC rabbit monoclonal antibody (STJ11102169) at dilution of 1:100 (40x lens). Blue: DAPI for nuclear staining.

This product is suitable for in-vitro studies under the RESEARCH USE ONLY [RUO] licence. This product must not be used as for diagnostic or other medical purposes.

St John's Laboratory Ltd, Knowledge Dock Business Centre, University Way, London, E16 2RD | Tel: 0208 223 3081