

Anti-IRF2 antibody [ARC0265] (STJ11102165)

STJ11102165

GENERAL INFORMATION

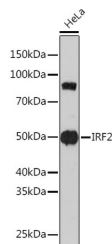
Product Type	Primary antibodies
Short Description	Rabbit monoclonal antibody anti-IRF2 is suitable for use in Western Blot and Immunoprecipitation.
Applications	WB, IP
Host/Source	Rabbit
Reactivity	Human

PRODUCT PROPERTIES

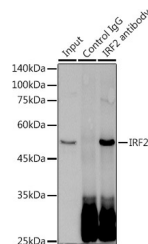
Clonality	Monoclonal
Clone ID	ARC0265
Concentration	
Conjugation	Unconjugated
Purification	Affinity purification
Dilution Range	WB 1:500-1:2000 IP 1:50-1:200
Formulation	PBS containing 0.02% Sodium Azide, 0.05% BSA, 50% Glycerol, pH7.3.
Isotype	IgG
Storage Instruction	Store in a freezer at -20°C and avoid freeze-thaw cycles.

TARGET INFORMATION

Gene ID	3660
Gene Symbol	IRF2
Uniprot ID	IRF2_HUMAN
Immunogen	A synthesized peptide derived from human IRF2
Immunogen Region	
Specificity	
Immunogen Sequence	



Western blot analysis of extracts of HeLa cells, using IRF2 rabbit monoclonal antibody (STJ11102165) at 1:1000 dilution. Secondary antibody: HRP Goat Anti-rabbit IgG (H+L) at 1:10000 dilution. Lysates/proteins: 25µg per lane. Blocking buffer: 3% nonfat dry milk in TBS-T. Detection: ECL Enhanced Kit. Exposure time: 3min.



Immunoprecipitation analysis of 300µg extracts of HeLa cells using 3µg IRF2 antibody (STJ11102165). Western blot was performed from the immunoprecipitate using IRF2 (STJ11102165) at a dilution of 1:500.

This product is suitable for in-vitro studies under the RESEARCH USE ONLY [RUO] licence. This product must not be used as for diagnostic or other medical purposes.
 St John's Laboratory Ltd, Knowledge Dock Business Centre, University Way, London, E16 2RD | Tel: 0208 223 3081