

Anti-RNF20 antibody [ARC0213] (STJ11102155)

STJ11102155

GENERAL INFORMATION

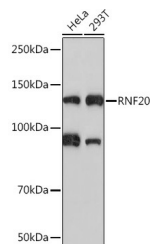
Product Type	Primary antibodies
Short Description	Rabbit monoclonal antibody anti-RNF20 is suitable for use in Western Blot.
Applications	WB
Host/Source	Rabbit
Reactivity	Human, Mouse

PRODUCT PROPERTIES

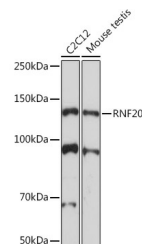
Clonality	Monoclonal
Clone ID	ARC0213
Concentration	
Conjugation	Unconjugated
Purification	Affinity purification
Dilution Range	WB 1:500-1:2000
Formulation	PBS containing 0.02% Sodium Azide, 0.05% BSA, 50% Glycerol, pH7.3.
Isotype	IgG
Storage Instruction	Store in a freezer at -20°C and avoid freeze-thaw cycles.

TARGET INFORMATION

Gene ID	56254
Gene Symbol	RNF20
Uniprot ID	BRE1A_HUMAN
Immunogen	A synthesized peptide derived from human RNF20
Immunogen Region	
Specificity	
Immunogen Sequence	



Western blot analysis of extracts of various cell lines, using RNF20 rabbit monoclonal antibody (STJ11102155) at 1:1000 dilution. Secondary antibody: HRP Goat Anti-rabbit IgG (H+L) at 1:10000 dilution. Lysates/proteins: 25ug per lane. Blocking buffer: 3% nonfat dry milk in TBST. Detection: ECL Basic Kit. Exposure time: 90s.



Western blot analysis of extracts of various cell lines, using RNF20 rabbit monoclonal antibody (STJ11102155) at 1:1000 dilution. Secondary antibody: HRP Goat Anti-rabbit IgG (H+L) at 1:10000 dilution. Lysates/proteins: 25ug per lane. Blocking buffer: 3% nonfat dry milk in TBST. Detection: ECL Enhanced Kit. Exposure time: 3min.

This product is suitable for in-vitro studies under the RESEARCH USE ONLY [RUO] licence. This product must not be used as for diagnostic or other medical purposes.
St John's Laboratory Ltd, Knowledge Dock Business Centre, University Way, London, E16 2RD | Tel: 0208 223 3081