

Anti-KDM5A antibody [ARC1120] (STJ11102147)

GENERAL INFORMATION

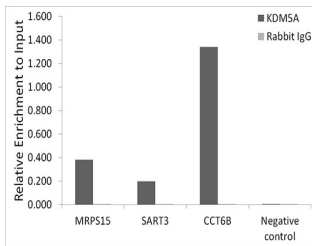
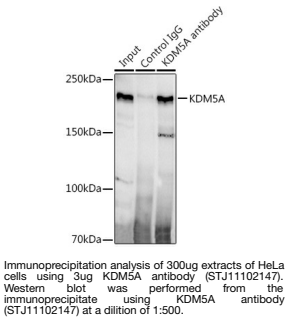
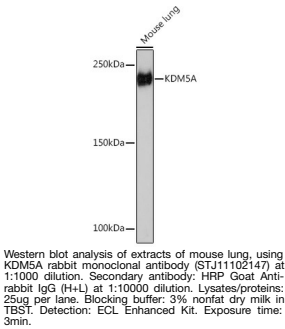
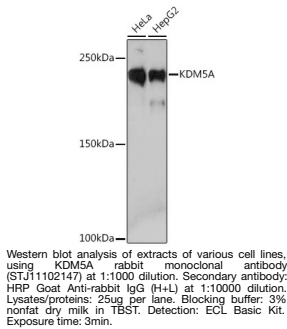
Product Type	Primary antibodies
Short Description	Rabbit monoclonal antibody anti-KDM5A is suitable for use in Western Blot and Immunoprecipitation.
Applications	WB, IP
Host/Source	Rabbit
Reactivity	Human, Mouse, Rat

PRODUCT PROPERTIES

Clonality	Monoclonal
Clone ID	ARC1120
Concentration	
Conjugation	Unconjugated
Purification	Affinity purification
Dilution Range	WB 1:500-1:2000 IP 1:50-1:200
Formulation	PBS containing 0.02% Sodium Azide, 0.05% BSA, 50% Glycerol, pH7.3.
Isotype	IgG
Storage Instruction	Store in a freezer at -20°C and avoid freeze-thaw cycles.

TARGET INFORMATION

Gene ID	5927
Gene Symbol	KDM5A
Uniprot ID	KDM5A_HUMAN
Immunogen	A synthesized peptide derived from human KDM5A
Immunogen Region	
Specificity	
Immunogen Sequence	



This product is suitable for in-vitro studies under the RESEARCH USE ONLY [RUO] licence. This product must not be used as for diagnostic or other medical purposes.
St John's Laboratory Ltd, Knowledge Dock Business Centre, University Way, London, E16 2RD | Tel: 0208 223 3081