

Anti-SMARCC1 antibody [ARC0948] (STJ11102030)

STJ11102030

GENERAL INFORMATION

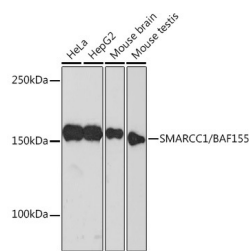
Product Type	Primary antibodies
Short Description	Rabbit monoclonal antibody anti-SMARCC1/BAF155 is suitable for use in Western Blot and Immunofluorescence.
Applications	WB, IF
Host/Source	Rabbit
Reactivity	Human, Mouse

PRODUCT PROPERTIES

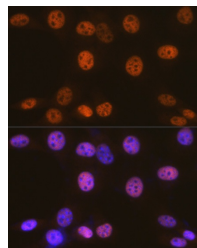
Clonality	Monoclonal
Clone ID	ARC0948
Concentration	
Conjugation	Unconjugated
Purification	Affinity purification
Dilution Range	WB 1:500-1:2000 IF 1:50-1:200 ChIP 1:50-1:200
Formulation	PBS containing 0.02% Sodium Azide, 0.05% BSA, 50% Glycerol, pH7.3.
Isotype	IgG
Storage Instruction	Store in a freezer at -20°C and avoid freeze-thaw cycles.

TARGET INFORMATION

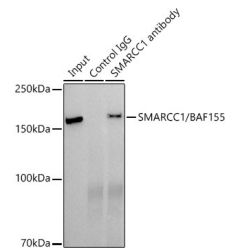
Gene ID	6599
Gene Symbol	SMARCC1
Uniprot ID	SMRC1_HUMAN
Immunogen	A synthesized peptide derived from human SMARCC1/BAF155
Immunogen Region	
Specificity	
Immunogen Sequence	



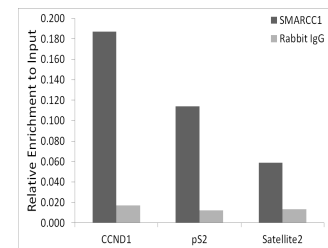
Western blot analysis of extracts of various cell lines, using SMARCC1/BAF155 rabbit monoclonal antibody (STJ11102030) at 1:500 dilution. Secondary antibody: HRP Goat Anti-rabbit IgG (H+L) at 1:10000 dilution. Lysates/proteins: 25ug per lane. Blocking buffer: 3% nonfat dry milk in TBST. Detection: ECL Basic Kit. Exposure time: 3min.



Immunofluorescence analysis of NIH-3T3 cells using SMARCC1/BAF155 rabbit monoclonal antibody (STJ11102030) at dilution of 1:100 (40x lens). Blue: DAPI for nuclear staining.



Immunoprecipitation analysis of 300ug extracts of HepG2 cells using 3ug SMARCC1/BAF155 antibody (STJ11102030). Western blot was performed from the immunoprecipitate using SMARCC1/BAF155 antibody (STJ11102030) at a dilution of 1:500.



Chromatin immunoprecipitation analysis of extracts of MCF7 beta-estradiol cells, using SMARCC1/BAF155 antibody (STJ11102030) and rabbit IgG. The amount of immunoprecipitated DNA was checked by quantitative PCR. Histogram was constructed by the ratios of the immunoprecipitated DNA to the input.

This product is suitable for in-vitro studies under the RESEARCH USE ONLY [RUO] licence. This product must not be used as for diagnostic or other medical purposes.
St John's Laboratory Ltd, Knowledge Dock Business Centre, University Way, London, E16 2RD | Tel: 0208 223 3081