

## Anti-HIF1AN antibody [ARC0826] (STJ11101933)

STJ11101933

### GENERAL INFORMATION

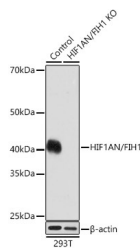
|                          |  |
|--------------------------|--|
| <b>Product Type</b>      | Primary antibodies   |
| <b>Short Description</b> | Rabbit monoclonal antibody anti-HIF1AN/FIH1 is suitable for use in Western Blot. |
| <b>Applications</b>      | WB   |
| <b>Host/Source</b>       | Rabbit   |
| <b>Reactivity</b>        | Human  |

### PRODUCT PROPERTIES

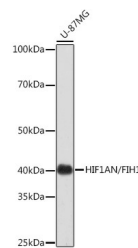
|                            |  |
|----------------------------|--|
| <b>Clonality</b>           | Monoclonal   |
| <b>Clone ID</b>            | ARC0826  |
| <b>Concentration</b>       |  |
| <b>Conjugation</b>         | Unconjugated   |
| <b>Purification</b>        | Affinity purification  |
| <b>Dilution Range</b>      | WB 1:500-1:2000  |
| <b>Formulation</b>         | PBS containing 0.02% Sodium Azide, 0.05% BSA, 50% Glycerol, pH7.3. |
| <b>Isotype</b>             | IgG  |
| <b>Storage Instruction</b> | Store in a freezer at -20°C and avoid freeze-thaw cycles.          |

### TARGET INFORMATION

|                           |  |
|---------------------------|--|
| <b>Gene ID</b>            | 55662  |
| <b>Gene Symbol</b>        | HIF1AN   |
| <b>Uniprot ID</b>         | HIF1N_HUMAN  |
| <b>Immunogen</b>          | A synthesized peptide derived from human HIF1AN/FIH1 |
| <b>Immunogen Region</b>   |  |
| <b>Specificity</b>        |  |
| <b>Immunogen Sequence</b> |  |



Western blot analysis of extracts from normal (control) and HIF1AN/FIH1 knockout (KO) 293T cells, using HIF1AN/FIH1 antibody (STJ11101933) at 1:1000 dilution. Secondary antibody: HRP Goat Anti-rabbit IgG (H+L) at 1:10000 dilution. Lysates/proteins: 25ug per lane. Blocking buffer: 3% nonfat dry milk in TBST. Detection: ECL Basic Kit. Exposure time: 3min.



Western blot analysis of extracts of U-87MG cells, using HIF1AN/FIH1 rabbit monoclonal antibody (STJ11101933) at 1:1000 dilution. Secondary antibody: HRP Goat Anti-rabbit IgG (H+L) at 1:10000 dilution. Lysates/proteins: 25ug per lane. Blocking buffer: 3% nonfat dry milk in TBST. Detection: ECL Basic Kit. Exposure time: 3min.

This product is suitable for in-vitro studies under the RESEARCH USE ONLY [RUO] licence. This product must not be used as for diagnostic or other medical purposes.  
 St John's Laboratory Ltd, Knowledge Dock Business Centre, University Way, London, E16 2RD | Tel: 0208 223 3081