

Anti-DPYSL5 antibody [ARC2020] (STJ11101888)

STJ11101888

GENERAL INFORMATION

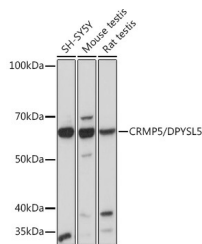
Product Type	Primary antibodies
Short Description	Rabbit monoclonal antibody anti-CRMP5 is suitable for use in Western Blot and Immunohistochemistry.
Applications	WB, IHC
Host/Source	Rabbit
Reactivity	Human, Mouse, Rat

PRODUCT PROPERTIES

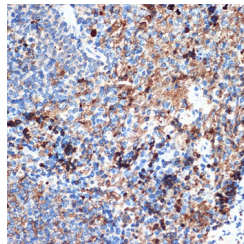
Clonality	Monoclonal
Clone ID	ARC2020
Concentration	
Conjugation	Unconjugated
Purification	Affinity purification
Dilution Range	WB 1:500-1:2000 IHC 1:50-1:200
Formulation	PBS containing 0.02% Sodium Azide, 0.05% BSA, 50% Glycerol, pH7.3.
Isotype	IgG
Storage Instruction	Store in a freezer at -20°C and avoid freeze-thaw cycles.

TARGET INFORMATION

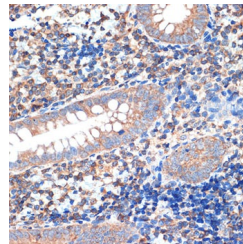
Gene ID	56896
Gene Symbol	DPYSL5
Uniprot ID	DPYL5_HUMAN
Immunogen	A synthesized peptide derived from human CRMP5/DPYSL5
Immunogen Region	
Specificity	
Immunogen Sequence	



Western blot analysis of extracts of various cell lines, using CRMP5/DPYSL5 rabbit monoclonal antibody (STJ11101888) at 1:1000 dilution. Secondary antibody: HRP Goat Anti-rabbit IgG (H+L) at 1:10000 dilution. Lysates/proteins: 25µg per lane. Blocking buffer: 3% nonfat dry milk in TBST. Detection: ECL Basic Kit. Exposure time: 10s.



Immunohistochemistry of paraffin-embedded rat spleen using CRMP5/DPYSL5 rabbit monoclonal antibody (STJ11101888) at dilution of 1:100 (40x lens).



Immunohistochemistry of paraffin-embedded human appendix using CRMP5/DPYSL5 rabbit monoclonal antibody (STJ11101888) at dilution of 1:100 (40x lens).