

## Anti-PLSCR1 antibody [ARC2028] (STJ11101867)

STJ11101867

### GENERAL INFORMATION

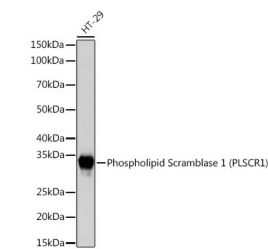
<b>Product Type</b>	Primary antibodies
<b>Short Description</b>	Rabbit monoclonal antibody anti-Scramblase 1 is suitable for use in Western Blot, Immunohistochemistry and Immunofluorescence.
<b>Applications</b>	WB, IHC, IF
<b>Host/Source</b>	Rabbit
<b>Reactivity</b>	Human, Mouse, Rat

### PRODUCT PROPERTIES

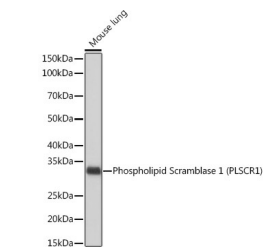
<b>Clonality</b>	Monoclonal
<b>Clone ID</b>	ARC2028
<b>Concentration</b>	Unconjugated
<b>Conjugation</b>	Affinity purification
<b>Purification</b>	WB 1:500-1:2000
<b>Dilution Range</b>	IHC 1:50-1:200
	IF 1:50-1:200
<b>Formulation</b>	PBS containing 0.02% Sodium Azide, 0.05% BSA, 50% Glycerol, pH7.3.
<b>Isotype</b>	IgG
<b>Storage Instruction</b>	Store in a freezer at -20°C and avoid freeze-thaw cycles.

### TARGET INFORMATION

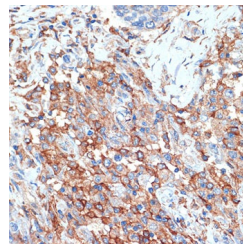
<b>Gene ID</b>	5359
<b>Gene Symbol</b>	PLSCR1
<b>Uniprot ID</b>	PLS1_HUMAN
<b>Immunogen</b>	A synthesized peptide derived from human Phospholipid Phospholipid Scramblase 1 (PLSCR1) (PLSCR1)
<b>Immunogen Region</b>	
<b>Specificity</b>	
<b>Immunogen Sequence</b>	



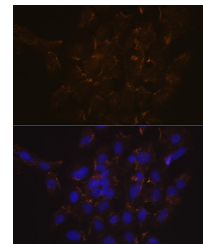
Western blot analysis of extracts of HT-29 cells, using Phospholipid Phospholipid Scramblase 1 (PLSCR1) (PLSCR1) rabbit monoclonal antibody (STJ11101867) at 1:1000 dilution. Secondary antibody: HRP Goat Anti-rabbit IgG (H+L) at 1:10000 dilution. Lysates/proteins: 25ug per lane. Blocking buffer: 3% nonfat dry milk in TBST. Detection: ECL Basic Kit. Exposure time: 3s.



Western blot analysis of extracts of mouse lung, using Phospholipid Phospholipid Scramblase 1 (PLSCR1) (PLSCR1) rabbit monoclonal antibody (STJ11101867) at 1:1000 dilution. Secondary antibody: HRP Goat Anti-rabbit IgG (H+L) at 1:10000 dilution. Lysates/proteins: 25ug per lane. Blocking buffer: 3% nonfat dry milk in TBST. Detection: ECL Basic Kit. Exposure time: 10s.



Immunohistochemistry of paraffin-embedded human breast cancer using Phospholipid Phospholipid Scramblase 1 (PLSCR1) (PLSCR1) rabbit monoclonal antibody (STJ11101867) at dilution of 1:100 (40x lens). Perform microwave antigen retrieval with 10 mM Tris/EDTA buffer pH 9.0 before commencing with immunohistochemistry staining protocol.



Immunofluorescence analysis of C6 cells using Phospholipid Phospholipid Scramblase 1 (PLSCR1) (PLSCR1) rabbit monoclonal antibody (STJ11101867) at dilution of 1:100 (40x lens). Blue: DAPI for nuclear staining.

This product is suitable for in-vitro studies under the RESEARCH USE ONLY [RUO] licence. This product must not be used as for diagnostic or other medical purposes.

St John's Laboratory Ltd, Knowledge Dock Business Centre, University Way, London, E16 2RD | Tel: 0208 223 3081